

# ONSITE CONFERENCE PROGRAM BOOK

34<sup>TH</sup> ANNUAL SCIENTIFIC SESSIONS

## Charting the Path of Diversity, Equity and Inclusion Through Nursing Science



March 31 – April 1, 2022 | Providence, RI



# WELCOME

## Welcome to the 34<sup>th</sup> Annual Scientific Sessions in Providence, Rhode Island!



We are thrilled you are joining us for this year's exciting in-person conference!

Our conference theme is Charting the Path of Diversity, Equity and Inclusion through Nursing Science. We extend our sincere appreciation to our annual partners and conference sponsors for their generous financial support and help in sustaining the Eastern Nursing Research Society.

We are truly grateful for the ongoing support and dedication of our members as we have continued to navigate these challenging times. We remember those we have lost due to the COVID-19 pandemic and racial injustice. We continue to stand in solidarity with individuals, groups, and communities from diverse backgrounds and experiences who have suffered from the pandemic, systemic racial injustices, and health inequities.

Thank you to our incredible ENRS Executive Board, President-Elect Dr. Jane Flanagan, Treasurer Dr. Lisa Lewis, Secretary Dr. Allison Norful, and Members-At-Large Dr. Melissa O'Connor (Awards), Dr. Marilyn Hammer (Communications), and Dr. Lisa Kitko (Research Interest Groups [RIGs]), as well as our committees, RIGs, and members. Their dedication hard work has enabled ENRS to thrive and grow even stronger as an organization.

I applaud our Executive Board for its strong leadership in advancing our vision to promote health through nursing science and its stewardship in implementing our comprehensive 2020-2025 strategic plan. Please join us at the All Members Meeting to learn more about our strategic initiatives.

Over the past two years, ENRS has not only reaffirmed our commitment to diversity, equity, and inclusion, we have acted. We have acted by creating our Inclusion, Diversity, Equity, and Accessibility (IDEA) Advisory Group led by Dr. Lisa Lewis and comprised of diverse members from academic and clinical organizations across the region. The IDEA Advisory Group has made substantive recommendations to the Board regarding membership, our organizational structure and branding, as well as our organizational climate and equity, that will further strengthen ENRS in embracing these important core values. We have also acted by providing forums for our members to network and engage with one another throughout the year to share their scientific work through our RIGs and regular webinar series in addition to offering enhanced membership and communication opportunities.

Many thanks to our amazing Conference Planning Committee, chaired by President-Elect Dr. Jane Flanagan as well as our expert abstract reviewers, abstract slotter, and ACG management team for their flexibility, creativity, and tireless commitment to ensure the success of our 34<sup>th</sup> Annual ENRS Conference. We are incredibly proud of the work of our organization and our members this past year. We invite you to view the outstanding presentations by top nurse scientists, mid-career researchers, and emerging scholars. Continuing education credit is available for the live and on demand presentations. We look forward to your feedback and continued collaboration and partnership.

As my term as ENRS President nears its end, I am truly grateful for the honor of serving our esteemed organization and its members. My life has been enriched by this incredible experience and the lasting relationships I have built with many valued colleagues and friends. I am proud of how ENRS has thrived, grown during these challenging times by standing together with those who are most vulnerable by making a difference through nursing science. I am confident Dr. Flanagan and the incoming Board will provide strong leadership in guiding the future of ENRS.

Please accept my heartfelt gratitude as we continue to work together to advance our ENRS mission to promote innovative nursing science.

Warmest wishes,

A handwritten signature in blue ink that reads "Ann Marie Mauro". The script is fluid and cursive.

**Ann Marie Pietronico Mauro, PhD, RN, CNL, CNE, FAHA, FAAN**  
President, Eastern Nursing Research Society

# SCHEDULE AT A GLANCE

## WEDNESDAY MARCH 30, 2022

### 3:00 PM – 4:00 PM

Nurse Leadership Meeting  
➤ Meeting Room 557

### 3:00 PM – 4:00 PM

#### RIG Meetings

Aging

➤ Meeting Room 550 A

Comprehensive Systematic Review/  
Knowledge Translation

➤ Meeting Room 550A

Criminal Justice, Trauma & Violence

➤ Meeting Room 550 B

CTSA Nurse Researchers

➤ Meeting Room 550 B

Early Career Nurse Scientists (ECNS)

➤ Meeting Room 554 A

Evidenced-Based Practice Improvement

➤ Meeting Room 554 A

Family/Community-Based Participatory

➤ Meeting Room 554 B

Global Health

➤ Meeting Room 554 B

### 4:00 PM – 5:00 PM

#### RIG Meetings

Health Services Research

➤ Meeting Room 550 A

LGBTQIA Health and Health Disparities

➤ Meeting Room 550 A

Mental Health and Substance Use

➤ Meeting Room 550 B

Palliative Care

➤ Meeting Room 550 B

Precision Health

➤ Meeting Room 554 A

Qualitative Research

➤ Meeting Room 554 A

Spirituality and Ethics

➤ Meeting Room 554 B

Theory Development

➤ Meeting Room 554 B

### 4:30 PM – 5:30 PM

Sponsors/Partners & VIP

Meet and Greet with ENRS Board

➤ Omni Providence Hotel –  
South County Room  
(by invitation only)

## THURSDAY MARCH 31, 2022

### 6:30 AM – 8:00 AM

Grab and Go Breakfast

➤ Ballroom Pre-function

*Sponsored by the University of  
Connecticut, School of Nursing*

### 7:00 AM – 6:00 PM

Exhibits

➤ Ballroom Pre-function

### 7:00 AM – 6:00 PM

Registration

➤ West Pre-function

### 7:30 AM – 8:00 AM

Poster Session I: Set-up

➤ Ballroom D/E

### 8:00 AM – 9:30 AM

Opening Remarks, 2022 Annual

Outstanding Researcher Awards,

& Opening Keynote

Gina S. Brown, PhD, RN, MSA, FAAN,  
Dean, Howard University, College of  
Nursing and Allied Health Sciences

➤ Ballroom A

### 9:45 AM – 10:45 AM

Concurrent Workshops

➤ (see page 6 for details)

### 10:45 AM – 11:00 AM

Refreshment Break

➤ Ballroom Pre-function

### 11:00 AM – 11:45 AM

Poster Session I:

Meet the Researchers

➤ Ballroom D/E

### 11:45 AM – 12:45 PM

Grab and Go Lunch

➤ Ballroom Pre-function

### 12:30 PM – 12:45 PM

Poster Session 2: Set-up

➤ Ballroom D/E

### 12:45 PM – 2:15 PM

Scientific Series A

➤ (see page 6 for details)

### 12:45 PM – 2:15 PM

Funder & Senior Scientist 1:1

Appointments (by appointment only)

➤ Rotunda

### 2:30 PM – 3:15 PM

Poster Session 2:

Meet the Researchers

➤ Ballroom D/E

### 3:15 PM – 3:30 PM

Refreshment Break

➤ Ballroom Pre-function

### 3:30 PM – 5:00 PM

Scientific Series B

➤ (see page 6 for details)

### 3:30 PM – 5:00 PM

Funder & Senior Scientist 1:1

Appointments (by appointment only)

➤ Rotunda

### 5:15 PM – 6:00 PM

All Members Meeting

➤ Ballroom A

### 5:45 PM – 6:00 PM

BS, MS, DNP, and Early PhD School

Selected Poster and Emerging Clinical

Research/Scholar Poster Set-up

➤ Ballroom D/E

### 6:15 PM – 7:00 PM

BS, MS, DNP, and Early PhD School

Selected Poster and Emerging Clinical

Research/Scholar Poster Viewing,

Awards & Welcome Reception

➤ Ballroom D/E

*Sponsored by the University  
of Pittsburgh*



## FRIDAY APRIL 1, 2022

### 6:30 AM – 8:00 AM

Grab and Go Breakfast  
➤ Ballroom Pre-function

### 6:30 AM – 3:30 PM

Exhibits  
➤ Ballroom Pre-function

### 7:00 AM – 12:00 PM

Registration  
➤ West Pre-function

### 7:45 AM – 8:00 AM

Poster Session 3: Set-up  
➤ Ballroom D/E

### 8:10 AM – 8:15 AM

Welcome & Update from Friends of the  
National Institute of Nursing Research  
(FNINR)  
➤ Ballroom A

### 8:15 AM – 9:15 AM

Plenary Panel Presentation:  
Intersectionality, Innovation and Nurses'  
Responsibility to Health Inequities in  
Research  
➤ Ballroom A

### 9:30 AM – 11:00 AM

Scientific Series C  
(see page 6 for details)

### 11:15 AM – 12:00 PM

Poster Session 3: Meet the Researchers  
➤ Ballroom D/E

### 11:15 AM – 12:00 PM

Grab and Go Lunch  
➤ Ballroom Pre-function

### 12:00 PM – 1:30 PM

Funder & Senior Scientist 1:1  
Appointments (by appointment only)  
➤ Rotunda

### 12:00 PM – 1:30 PM

Scientific Series D  
➤ (see page 6 for details)

### 1:45 PM – 3:15 PM

Scientific Series E  
➤ (see page 6 for details)

### 2:45 PM – 3:15 PM

Funder & Senior Scientist 1:1  
Appointments (by appointment only)  
➤ Rotunda

### 3:30 PM – 3:50 PM

Student Peer-Reviewed Paper/Poster  
Awards and Closing Remarks  
➤ Ballroom A

### 3:50 PM

Adjournment



## SESSIONS AT A GLANCE

### THURSDAY, MARCH 31, 2022 | 9:45 AM – 10:45 AM | CONCURRENT WORKSHOPS

WORKSHOP 1:	WORKSHOP 2:	WORKSHOP 3:	WORKSHOP 4:	WORKSHOP 5:
Meeting Room 556	Meeting Room 552A	Meeting Room 553	Meeting Room 551	Meeting Room 555
Pathways to Becoming a Fulbright Scholar Focused on Reducing Health Disparities Through Research and/or Teaching	ENRS Precision Health RIG Symposium 2022	Obtaining Funding to Promote Health of Diverse Populations: Perspectives from Aging Researchers	<i>Funding Panel</i> Guidance on Funding Success from NINR and Senior Scientists	<i>Publishing Panel</i> Editors' Advice: Publishing Relevant, Rigorous, and Equitable Research

### THURSDAY, MARCH 31, 2022 | 12:45 PM – 2:15 PM | SCIENTIFIC SERIES A

Paper Session A1:	Paper Session A2:	Paper Session A3:	Paper Session A4:	Paper Session A5:	Symposium Session A6:
Meeting Room 551	Meeting Room 552B	Meeting Room 555	Meeting Room 556	Meeting Room 553	Meeting Room 552A
Childbearing and Women's Health	Palliative and End of Life Care	Adult and Older Adult	Bio-Behavioral Research	Child and Adolescent Health	Rhode Island Cohort of Adults Born Preterm: Findings & Implications from a Longitudinal Birth Cohort

### THURSDAY, MARCH 31, 2022 | 3:30 PM – 5:00 PM | SCIENTIFIC SERIES B

Paper Session B1:	Paper Session B2:	Paper Session B3:	Paper Session B4:	Symposium Session B5:	Symposium Session B6:
Meeting Room 551	Meeting Room 556	Meeting Room 555	Meeting Room 553	Meeting Room 552A	Meeting Room 552B
Childbearing and Women's Health	Chronic Illness	Technology and Informatics	Health Promotion Behaviors and Disease Prevention	The Path to Health Equity and Inclusion for Sexual and Gender Minority Populations through Nursing Science	Empowering Nurse Practitioners to Meet the Demand for Primary Care

### FRIDAY, APRIL 1, 2022 | 9:30AM – 11:00 AM | SCIENTIFIC SERIES C

Paper Session C1:	Paper Session C2:	Paper Session C3:	Paper Session C4:	Paper Session C5:	Symposium Session C6:
Meeting Room 555	Meeting Room 552A	Meeting Room 552B	Meeting Room 553	Meeting Room 551	Meeting Room 556
Social Determinants of Health	Quality & Safety	Health Promotion Behaviors and Disease Prevention	Mental Health, HCP	Nursing Education	Qualitative RIG Symposium: Nurse Scientists Thinking Outside the Box to Address Diversity and Qualitative Data Collection informed by a Pandemic

### FRIDAY, APRIL 1, 2022 | 12:00 PM – 1:30 PM | SCIENTIFIC SERIES D

Paper Session D1:	Paper Session D2:	Paper Session D3:	Paper Session D4:	Paper Session D5:	Symposium Session D6:
Meeting Room 556	Meeting Room 555	Meeting Room 552A	Meeting Room 552B	Meeting Room 553	Meeting Room 551
Organizational and Workforce Issues	Nursing Education	Organizational and Workforce Issues	Organizational and Workforce Issues	Childbearing and Women's Health	Charting a Diverse Path toward Equity in Maternal Child Health by the Effect of the Social and Community Context

### FRIDAY, APRIL 1, 2022 | 1:45 PM – 3:15 PM | SCIENTIFIC SERIES E

Paper Session E1:	Paper Session E2:	Paper Session E3:	Paper Session E4:	Symposium Session E5:
Meeting Room 551	Meeting Room 555	Meeting Room 553	Meeting Room 552A	Meeting Room 552B
Organizational and Workforce Issues	Chronic Illness	LGBTQIA Health	Mental Health, Patient	Examining Strategies to Promote Health Equity for Persons with an Incarceration Experience

# ► CONFERENCE

## The objectives for the ENRS 34<sup>th</sup> Annual Scientific Sessions are:

1. Evaluate the impact of existing and emerging nursing knowledge focused on health equity to meet the needs of a diverse society.
2. Discuss transformative nursing research that addresses equitable and accessible care across populations.
3. Develop strategies to disseminate and implement nursing science that promotes diversity, health equity and inclusion.

## Who Should Attend

ENRS members, other nurse researchers, faculty, practicing nurses, graduate students in doctoral and master's programs, and other students interested in nursing research.

## Continuing Education Credit

In support of improving patient care, this activity has been planned and implemented by Amedco LLC and Eastern Nursing Research Society. Amedco LLC is jointly accredited by the Accreditation Council for Continuing Medical Education (ACCME), the Accreditation Council for Pharmacy Education (ACPE), and the American Nurses Credentialing Center (ANCC), to provide continuing education for the healthcare team.

Nurses (ANCC) Credit Designation Amedco LLC designates this activity for a maximum of 14.25 ANCC contact hours.

## Satisfactory Completion

Participants must complete an attendance/evaluation form in order to receive a certificate of completion/attendance. Your chosen sessions must be attended in their entirety. Partial credit of individual sessions is not available.

## COVID Safety Precautions and Vaccine Requirements

The ENRS Board is concerned with the health and safety of our members. Our management team will continue to follow up-to-date health and safety guidance from the Centers for Disease Control as well as local and state health officials.

The 34<sup>th</sup> Annual Scientific Sessions of the Eastern Nursing Research Society will be held in-person in Providence, Rhode Island with selected plenary sessions available virtually. All in person participants and guests of the 34<sup>th</sup> Annual Scientific Sessions must be fully vaccinated to attend, including a booster dose if eligible. While Rhode Island is currently a low-risk area per the CDC guidelines, the ENRS Board has decided to maintain the indoor mask requirement at our conference.



## CONFERENCE HIGHLIGHTS

- **Opening Keynote Speaker:** Gina S. Brown, PhD, RN, MSA, FAAN, Dean, Howard University, College of Nursing and Allied Health Sciences
- **Friday Plenary Panel Session Speakers:**

**Moderator:** Mary Sullivan, PhD, RN, FAAN, Professor, The University of Rhode Island, College of Nursing

**Panelists:**

Robert Atkins, PhD, RN, FAAN, Director, New Jersey Health Initiatives of Robert Wood Johnson Foundation, Rutgers, The State University of New Jersey, School of Nursing – Camden

Annette T. Maruca, PhD, RN-BC, CNE, CCHP, Clinical Professor, University of Connecticut, School of Nursing

Mitchell Wharton, PhD, RN, FNP-BC, CNS, Associate Professor of Clinical Nursing, Associate Dean for Equity and Inclusion, University of Rochester, School of Nursing
- **Five Workshop Sessions**
- **Outstanding Researcher Awards**
- **Awards for peer-reviewed paper and poster presentations by doctoral students**
- **Awards for BS, MS, DNP, and early PhD School-Selected Student Poster Presentations**
- **Awards for Emerging Clinical Nurse Researcher/Scholar Poster Presentation**

# ▶ THANK YOU

## Thank you to the following organizations for their support of ENRS and the 34<sup>th</sup> Annual Scientific Sessions

### ANNUAL PARTNERS

#### CHAMPION PARTNERS:

- Thomas Jefferson University, College of Nursing
- University of Pittsburgh, School of Nursing

#### LEADER PARTNERS:

- Boston College, William F. Connell School of Nursing
- Columbia University, School of Nursing
- Hospital at the University of Pennsylvania
- New York University, Rory Meyers College of Nursing
- Rockefeller University
- University of Massachusetts, Amherst College of Nursing
- University of Rhode Island, College of Nursing
- Villanova University, M. Louise Fitzpatrick College of Nursing

#### MENTOR PARTNERS:

- Endicott College, Cummings School of Nursing and Health Sciences
- Massachusetts General Hospital (MGH), Yvonne L. Munn Center for Nursing Research
- Rutgers, The State University of New Jersey, School of Nursing
- Rutgers, The State University of New Jersey, School of Nursing - Camden
- University at Buffalo, School of Nursing
- University of Connecticut School of Nursing
- University of Massachusetts Boston, Robert and Donna Manning College of Nursing and Health Sciences

#### PEER PARTNERS:

- Monmouth University, Marjorie K. Unterberg School of Nursing and Health Studies
- Pace University Lienhard School of Nursing
- Penn Nursing University of Pennsylvania
- Phyllis F. Cantor Center at Dana-Farber Cancer Institute
- The College of New Jersey

### CONFERENCE SPONSORS

#### DISTINGUISHED PARTNERS:

- Boston College, William F. Connell School of Nursing
- Thomas Jefferson University, College of Nursing
- Monmouth University, Marjorie K. Unterberg School of Nursing and Health Studies

#### SUSTAINING PARTNER:

- The Pennsylvania State University, Ross and Carol Nese College of Nursing

#### SUPPORTING PARTNERS:

- Hunter College, Hunter-Bellevue School of Nursing
- Massachusetts General Hospital (MGH), Yvonne L. Munn Center for Nursing Research
- Memorial Sloan Kettering Cancer Center
- Northeastern University School of Nursing - Boston Campus
- University of Rochester, School of Nursing

#### CONFERENCE PARTNERS:

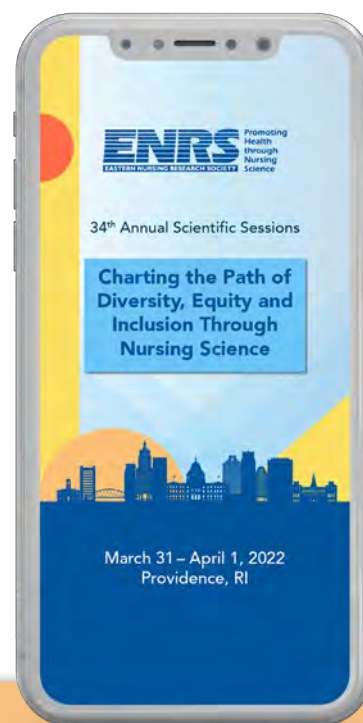
- George Washington University, School of Nursing
- University of Connecticut, School of Nursing
- University of Pittsburgh, School of Nursing
- University of Rhode Island, College of Nursing

#### EXHIBITORS:

- Boston College Connell, School of Nursing
- Columbia University, School of Nursing
- Hunter College, Hunter-Bellevue School of Nursing
- Thomas Jefferson University, College of Nursing
- Memorial Sloan Kettering Cancer Center
- Molloy College
- Monmouth University, Marjorie K. Unterberg School of Nursing and Health Studies
- Northeastern University School of Nursing - Boston Campus
- Pace University, Lienhard School of Nursing
- Rhode Island College
- The Pennsylvania State University, Ross and Carol Nese College of Nursing
- University at Buffalo, School of Nursing
- University of Connecticut, School of Nursing
- University of Massachusetts Dartmouth
- University of Pittsburgh
- University of Rochester, School of Nursing

## 2022 ABSTRACT REVIEWERS

Intima Alrimawi	Ellen McCabe
Rita Amoah	Mary McCurry
Rahshida Atkins	Ditsapelo McFarland
Hilary Barnes	Jean McHugh
Mary Baumberger-Henry	Michelle McKay
Cynthia Bautista	John Merriman
Liza Behrens	Lauren Murphy
Jean Bernhardt	Allison Norful
Katherine Bernier Carney	Serah Nthenge
Heather Brom	Patricia O'Brien-Barry
Sherry Burrell	Melissa O'Connor
Diane Carroll	Hyeyoung Park
Sharon Casavant	Anju Paudel
Ying-Yu Chao	Darina Petrovsky
Jie Chen	Paul Quinn
Kimberly Conway	Susan Revell
Amy D'Agata	Jennifer Ross
Carol Della Ratta	Meghan Ryan Madonna
Patricia Eckardt	Monika Schuler
Debra Erickson-Owens	Erica Sciarra
Anna Etchin	Patricia Sciscione
Michael Evans	Justine Sefcik
Kristen Fessele	Jin Young Seo
Jane Flanagan	Kristen Sethares
Cira Fraser	Margie Sipe
Annie George	Arlene Smaldone
Martha Greenberg	Marianne Snyder
Christine Grippi	Carol Soto
Marilyn Hammer	Pamela Spigelmyer
Laura Hayman	Jaimol Sreedhar
Donna Ho-Shing	Catherine Stubin
Alex Hoyt	Susan Sullivan-Bolyai
Amanda Jenkinson	Kathleen Tennant
Karen Jennings Mathis	Mirinda Tyo
Edwin-Nikko Kabisgting	Tracy Vitale
Olga Kagan	Susan Weaver
Mary Louise Kanaskie	Teresa Wenner
Michelle Kelly	Nancy Wise
Ainat Koren	Fay Wright
Aliya Kuerban	Kyeongra Yang
Susan Loeb	Kathleen Zavotsky
Ann Marie Mauro	



## ENRS 2022 MOBILE APP

The official mobile app for the Annual Scientific Sessions is ready to download on your iPhone, iPad, or Android! Click <http://m.xcdsystem.com/enrs217> from your device. Apple and Android users can also search for the app in the iTunes store or Play store.

Once installed, you'll have instant access to awesome features, like:

- Full Program Schedule
- Abstracts
- Detailed information about speakers, exhibitors, and sponsors
- Notifications of important updates, special offers, and more via the Activity Feed

**Thank You!**

# ▶ LEADERSHIP

## ENRS EXECUTIVE BOARD

### President

Ann Marie P. Mauro, PhD, RN, CNL, CNE, FAHA, FAAN  
Monmouth University, Marjorie K. Unterberg School of Nursing  
and Health Studies

### President-Elect

Jane Flanagan, PhD, RN, AHN-BC, ANP-BC, FNI, FNAP, FAAN  
Boston College, William F. Connell School of Nursing

### Treasurer

Lisa Lewis PhD, RN, FAAN, FAHA  
University of Pennsylvania, School of Nursing

### Secretary

Allison Norful PhD, RN, ANP-BC, FAAN  
Columbia University, School of Nursing

### Member-at-Large, Research Interest Groups

Lisa A. Kitko, PhD, RN, FAHA, FAAN  
The Pennsylvania State University, Ross and Carol Nese  
College of Nursing

### Member-at-Large, Awards

Melissa O'Connor, PhD, MBA, RN, FGSA, FAAN  
Villanova University, M. Louise Fitzpatrick College  
of Nursing

### Member-at-Large, Communications

Marilyn J. Hammer, PhD, DC, RN, FAAN  
Dana-Farber Cancer Institute

## 2022 CONFERENCE PLANNING COMMITTEE

### Conference Chair, President-Elect

Jane Flanagan, PhD, RN, AHN-BC, ANP-BC, FNI, FNAP, FAAN  
Boston College, William F. Connell School of Nursing

Marie Boltz, PhD, GNP-BC, FGSA, FAAN  
The Pennsylvania State University, Ross and Carol Nese  
College of Nursing

Elizabeth F. Chin, PhD, RN, ANP  
University of Massachusetts Dartmouth, College of Nursing  
& Health Sciences

Veronica Erasquin, DNP, RN, CCRN  
Massachusetts General Hospital

Angela Gerolamo, PhD, APRN, BC  
Thomas Jefferson University, College of Nursing

Kristin Magen, PhD, APRN-CNP, AGPCNP-BC  
The University of Rhode Island, College of Nursing

Jennifer Mammen, PhD, APRN-CNP  
The University of Rhode Island, College of Nursing

### President

Ann Marie P. Mauro, PhD, RN, CNL, CNE, FAHA, FAAN  
Monmouth University, Marjorie K. Unterberg School of  
Nursing and Health Studies

Melissa O'Connor, PhD, MBA, RN, FGSA, FAAN  
Villanova University, M. Louise Fitzpatrick College  
of Nursing

Priscilla Okunji, PhD, RN, MS, CMC, FIMC  
Howard University, College of Nursing and Allied  
Health Sciences

So Hyun Park, PhD, RN, ANP-BC  
Hunter College, Hunter-Bellevue School of Nursing





# Share Your Experience at ENRS 2022 With The World!

Like our page on Facebook and follow up on Twitter, @ENRS go and tag ENRS to any conference photos that you upload.



Don't forget to use this year's hashtag:

## #ENRS2022

### Photo Release

From time to time, we use photographs of conference participants in our promotional materials, website, and social media. By virtue of your attendance at the 34<sup>th</sup> Annual Scientific Sessions, ENRS reserves the right to use your likeness in such material.

# ▶ LEARNER NOTIFICATION

## ENRS 2022 CE

### Acknowledgement of Financial Commercial Support

No financial commercial support was received for this educational activity.

### Acknowledgement of In-Kind Commercial Support

No in-kind commercial support was received for this educational activity.



### Satisfactory Completion

Learners must complete an evaluation form to receive a certificate of completion. Your chosen sessions must be attended in their entirety. Partial credit of individual sessions is not available. If you are seeking continuing education credit for a specialty not listed below, it is your responsibility to contact your licensing/certification board to determine course eligibility for your licensing/certification requirement.

In support of improving patient care, this activity has been planned and implemented by Amedco LLC and Eastern Nursing Research Society. Amedco LLC is jointly accredited by the Accreditation Council for Continuing Medical Education (ACCME), the Accreditation Council for Pharmacy Education (ACPE), and the American Nurses Credentialing Center (ANCC), to provide continuing education for the healthcare team.

### Credit Designation Statement

Amedco LLC designates this activity for a maximum of 14.25 ANCC contact hours.

### Objectives

After attending this program you should be able to:

1. Evaluate the impact of existing and emerging nursing knowledge focused on health equity to meet the needs of a diverse society.
2. Discuss transformative nursing research that addresses equitable and accessible care across populations.
3. Develop strategies to disseminate and implement nursing science that promotes diversity, health equity and inclusion.

### Disclosure of Conflict of Interest

The following table of disclosure information is provided to learners and contains the relevant financial relationships that each individual in a position to control the content disclosed to Amedco. All of these relationships were treated as a conflict of interest, and have been resolved. (C7 SCS 6.1-6.2, 6.5)

All individuals in a position to control the content of CE are listed in this program book. If their name is not listed on <https://www.enrs-go.org/assets/ENRS%202022%20LLN.pdf>, they disclosed that they had no financial relationships with a commercial interest.

### How to get your certificate:

1. Go to <http://enrs.cmecertificateonline.com>
2. Click on the "Eastern Nursing Research Society 34<sup>th</sup> Annual Scientific Sessions" link
3. Evaluate the conference

Please print all pages of your certificate for your record.

### CEU Questions

Email: [Certificate@AmedcoEmail.com](mailto:Certificate@AmedcoEmail.com)



## ▶ AWARDS

EASTERN NURSING RESEARCH SOCIETY PRESENTS

## THE 2022 ANNUAL AWARD RECIPIENTS



### THE DISTINGUISHED CONTRIBUTIONS TO NURSING RESEARCH AWARD

is given annually in recognition of sustained and outstanding contributions to nursing research by a Senior Investigator. The Awards Committee is proud to honor **Yvette Conley, PhD, FAAN, University of Pittsburgh**, with the 2022 Distinguished Contributions to Nursing Research Award.



**THE RISING STAR RESEARCH AWARD** recognizes a Junior Investigator that has shown promise in establishing a program of health and/or nursing research. The Awards Committee is proud to honor **Jasmine Travers, PhD, MHS, RN, AGPCNP-BC, New York University, Rory Meyers College of Nursing**, with the 2022 Rising Star Research Award.



**THE ENRS/COUNCIL FOR THE ADVANCEMENT OF NURSING SCIENCE DISSERTATION AWARD** is given annually to a doctoral candidate enrolled in a program of nursing that awards a research doctoral degree requiring a dissertation. The Awards Committee is proud to honor **Tingting Zhao, University of Connecticut**, with 2022 ENRS/Council for the Advancement of Nursing Science Dissertation Award.



**THE SUZANNE FEETHAM NURSE SCIENTIST FAMILY RESEARCH AWARD** is given annually in recognition of outstanding contributions by a Junior Investigator (earned doctorate in last 7 years with a developing program of family research and scholarship) OR Senior investigator (has a well-established program of family research and scholarship). The Awards Committee is proud to honor **Susan DeSanto-Madeya, PhD, RN, FAAN, University of Rhode Island, College of Nursing**, with the 2022 Suzanne Feetham Nurse Scientist Family Research Award.



**THE ENRS/NURSING RESEARCH AUTHORSHIP AWARD** recognizes an ENRS member who disseminated research findings, or important theoretical, or methodological advances in the official ENRS Journal, Nursing Research, within the previous year. The Awards Committee is proud to honor **Nalini Jairath, PhD, RN, The Catholic University of America, Conway School of Nursing**, with the 2022 ENRS/Nursing Research Authorship Award.

# PROGRAM OF EVENTS

## WORKSHOP 1:

### Pathways to Becoming a Fulbright Scholar Focused on Reducing Health Disparities Through Research and/or Teaching

Fulbright Scholars are prestigious, internationally recognized faculty or students who conduct significant research/teaching projects on diverse subjects. Fulbright Fellow's projects can be solely research, teaching, or research/teaching combined. This workshop will include four nurses (3 faculty; 1 PhD student) presenters who have submitted/been awarded Fulbright grants with projects that are directly addressing health disparities or inequities in access to care and nursing science in international locations and will describe critical elements required for their Fulbright projects.

#### Objectives:

1. Identify important aspects of planning a Fulbright application including building and sustaining international research collaborations and creating synergy to maximize research goals.
2. Explain the importance of linking research outcomes across countries for greater impact and recognizing measurable discoveries that are broadly applicable across national borders
3. Describe a dissemination plan that informs many countries, while being culturally sensitive and aware.

#### Projects:

**Project 1: Fulbright Structural Disparities in Digital Maturity in Residential Care Facilities:** Dr. Alexander will discuss a mixed methods study investigating relationships between digital maturity and quality measures in residential aged care across four states in Australia and New Zealand

**Project 2: Sexual Gender Minority Research:** Dr. Hughes will conduct mixed method assessments with nursing and medical school curricular stakeholders (e.g., educators, students, curriculum administrators) in two progressive countries—the Netherlands and Australia—to understand Sexual Gender Minority content included in these programs as well as barriers and enablers to teaching this content.

#### Panelists:

- Gregory Alexander, PhD, RN, FAAN, FACMI, FIAHSI, Helen Young CUPHSONAA Professor, Columbia University, School of Nursing
- Kylie Dougherty, BSN, RN, Graduate Student, Columbia University, School of Nursing
- Maureen George, PhD, RN, AE-C, FAAN, Professor, Columbia University, School of Nursing
- Tonda L Hughes, PhD, RN, FAAN, Henrik H. Bendixen Professorship of International Nursing, Columbia University, School of Nursing

**Project 3: International Disparities in Nursing Science:** The goal is to increase capacity and reduce disparities among nursing scientists by developing a shared decision-making intervention for a local public health issue and conduct training that pairs faculty from each school to perform rigorous systematic, integrative, or scoping literature reviews.

**Project 4: Health Disparities in Monitoring Obstetric Emergencies:** Ms. Dougherty's will discuss developing collaborations with the Regional Health Bureau in Amhara Ethiopia to enhance their ability to monitor and maintain clinical capacity for managing obstetric emergencies through the development and testing of an electronic dashboard using participatory research methods.

## WORKSHOP 2:

### ENRS Precision Health RIG Symposium 2022

The Precision Health RIG introduces a novel workshop format to present exemplars of early-stage investigators' research. Precision health research is more expansive than 'omic methodology. Precision health nursing research addresses diversity through incorporating behavioral, cultural, environmental, social determinants, and biological determinants of health to improve health equity. Precision health research discovers diverse phenotypes that allow for the identification of individualized interventions. This workshop will showcase early-stage precision health nursing scientists' work within the ENRS Community with presentations that describe the range of innovative precision-health methodologies that aim to improve health equity.

#### Objectives:

1. Describe precision health nursing research
2. Discuss the opportunities to improve health equity through precision health research
3. Explore collaborations through the Precision Health RIG

#### Speakers:

- Eileen M. Condon, PhD, APRN, FNP-BC Assistant Professor, University of Connecticut, School of Nursing
- Samantha Conley, PhD, RN, FNP-BC, Senior Associate Consultant Department of Nursing, The Mayo Clinic
- Ann Marie Moraitis, PhD, MS, RN, Postdoctoral Fellow T32 Interdisciplinary Training in Cancer, Caregiving, & End-of-Life Care, University of Utah, College of Nursing
- Fay Wright, PhD, RN, APRN-BC, Assistant Professor, Director of the Meyers Biological Lab, New York University, Rory Meyers College of Nursing
- And members of the Precision Health RIG

**WORKSHOP 3:****Obtaining Funding to Promote Health of Diverse Populations: Perspectives from Aging Researchers**

This concurrent workshop, hosted by the Aging Research Interest Group, focuses on strategies on how to obtain funding for research that promotes health of diverse populations across the lifespan. Presenters will highlight funding opportunities from federal, private, national, and local organizational entities that prioritize studies focused on diverse populations, as well as equity and inclusion. The panel will share their personal experiences in applying for funding and identify strategies when applying for funding opportunities which will be relevant to the ENRS community.

**Objectives:**

1. Participants will be able to identify funding opportunities from federal, private, and organizational entities that prioritize health of diverse populations.
2. Describe successful strategies when applying for funding opportunities.
3. Discuss strategies to promote collaboration among mentors and researchers.

**Speakers:**

- Billy Caceres, PhD, RN, AGPCNP-BC, FAAN, Assistant Professor, Columbia University, School of Nursing, Center for Sexual and Gender Minority Health Research
- Sherry A. Greenberg, PhD, RN, GNP-BC, FAANP, FAAN, Associate Professor, Seton Hall University, College of Nursing
- Darina Petrovsky, PhD, RN, Assistant Professor, Rutgers, The State University of New Jersey, School of Nursing
- Justine Sefcik, PhD, RN, Assistant Professor, Drexel University, College of Nursing and Health Professionals

**WORKSHOP 4:****Funding Panel Guidance on Funding Success from NINR and Senior Scientists**

This session will provide information about submitting scientifically rigorous grants to the NIH in light of the new strategic aims of the NINR. Attention will be given to issues of social determinants of health (SDH), diversity, equity, inclusion, and accessibility (DEIA) and their importance to science aimed at advancing the health of individuals and populations. Preparation of a scientifically rigorous application, determining the correct program for submission, the review process and responding to review will be covered.

**Objectives:**

1. Discuss the essential elements of scientifically rigorous grants considering the strategic aims of the NINR.
2. Integrate SDH and DEIA into programs of research aimed at improving the health of individuals and populations.
3. Understand the role of the program officer in guiding grant submission and revision.

**Speakers:**

- Kimberly Arcoleo, PhD, MPH, Research Professor, Director of Nursing Research, University of Rhode Island, College of Nursing
- David Banks, PhD, MPH, RN, Program Director and Health Scientist Administrator, National Institute of Nursing Research (NINR)
- Nancy S. Redeker, PhD, RN, FAHA, FAAN, Professor, University of Connecticut, School of Nursing, Beatrice Renfield Term Professor Emeritus of Nursing, Yale University  
\*ENRS Past President

**Moderator:** Marie Boltz, PhD, GNP-BC, FGSA, FAAN, Elouise Ross Eberly and Robert Eberly Endowed Professor, The Pennsylvania State University, Ross and Carol Nese College of Nursing

**WORKSHOP 5:****Publishing Panel Editors' Advice: Publishing Relevant, Rigorous, and Equitable Research**

This session will provide guidance on how to develop an exceptional peer-reviewed research manuscript considering issues of equity. The publication process from submission to final publication including how to work with editors will be discussed. Characteristics of a publishable scientific manuscript and common pitfalls to avoid will be addressed.

**Objectives:**

When preparing and submitting a manuscript for publication:

1. Identify how to select the appropriate journal for research findings considering aims, scope and issues of diversity, equity and inclusion.
2. Discuss ethical considerations related to authorship criteria.
3. Determine how to prepare a scholarly scientific paper and respond to review considering the submission life cycle from submission to publication.

**Panelists:**

- Jamesetta A. Newland, PhD, FNP-BC, FAANP, DPNAP, FAAN, Editor-in-Chief of The Nurse Practitioner, Clinical Professor Emerita, New York University, Rory Meyers College of Nursing
- Allison P. Squires, PhD, RN, FAAN, Associate Professor & Director, Florence S. Downs PhD Program in Nursing Research and Theory Development, New York University, Rory Meyers College of Nursing
- David Vlahov, PhD, RN, FAAN, Editor-in-Chief of Journal of Urban Health, Professor of Yale School of Nursing, Co-Director for National Program Office at Robert Wood Johnson Foundation's Culture of Health: Evidence for Action Program

**Moderator:** Suzanne C. Smeltzer, EdD, RN, ANEF, FAAN, Richard and Marianne Kreider Endowed Professor in Nursing for Vulnerable Populations, Villanova University, M. Louise Fitzpatrick College of Nursing

# PROGRAM OF EVENTS

## THURSDAY, MARCH 31, 2022

6:30 AM – 8:00 AM	Grab and Go Breakfast <i>Sponsored by the University of Connecticut, School of Nursing</i>	Ballroom Pre-function
7:00 AM – 6:00 PM	Exhibits	Ballroom Pre-function
7:00 AM – 6:00 PM	Registration	West Pre-function
7:30 AM – 8:00 AM	Poster Session I: Set-up	Ballroom D/E
8:00 AM – 9:30 AM	Opening Remarks, 2022 Annual Outstanding Researcher Awards, & Opening Keynote: Gina S. Brown, PhD, RN, MSA, FAAN, Dean, Howard University, College of Nursing and Allied Health Sciences	Ballroom A

### OPENING KEYNOTE PRESENTATION

#### Strengthening Nursing's Capacity of Diversity and Inclusion, while Achieving Equitable Outcomes



Presenter:

**Gina S. Brown, PhD, RN, MSA, FAAN,**  
Dean, Howard University, College of Nursing  
and Allied Health Sciences

Nursing has the ability to be the leading force in increasing the knowledge of appropriate diversity and inclusion within healthcare, thus reducing health inequities. Increasing the racial and ethnic diversity within nursing, has been proposed as a significant strategy to bring equality into health care access and delivery, while at the same time ensuring that equitable outcomes occur on a number of levels. Nursing science, nursing research and nursing practice can assist in bridging the multiplicity of gaps, which are prominent and destroy equitable outcomes for all.

#### Outcomes:

Attendees will have insight and understand the following outcomes after the presentation.

1. Attendees will have an overview of Institutional Racism, Personally Mediated Racism and Internalized Racism among and within the nursing science and practice arenas.
2. Attendees will understand the difference between Equity and Equality.
3. Health Inequalities will be evaluated on a minimalist level.
4. Attendees will evaluate how to begin the achievement of Equitable Outcomes through Nursing Research.

### 9:45 AM – 10:45 AM Concurrent Workshops

WORKSHOP 1:	WORKSHOP 2:	WORKSHOP 3:	WORKSHOP 4:	WORKSHOP 5:
Meeting Room 556	Meeting Room 552A	Meeting Room 553	Meeting Room 551	Meeting Room 555
Pathways to Becoming a Fulbright Scholar Focused on Reducing Health Disparities Through Research and/or Teaching	ENRS Precision Health RIG Symposium 2022	Obtaining Funding to Promote Health of Diverse Populations: Perspectives from Aging Researchers	<i>Funding Panel</i> Guidance on Funding Success from NINR and Senior Scientists	<i>Publishing Panel</i> Editors' Advice: Publishing Relevant, Rigorous, and Equitable Research

**THURSDAY, MARCH 31, 2022**

10:45 AM – 11:00 AM	Refreshment Break	Ballroom Pre-function
11:00 AM – 11:45 AM	Poster Session 1: Meet the Researchers & Exposition Hall	Ballroom D/E
11:45 AM – 12:45 PM	Grab and Go Lunch	Ballroom Pre-function
12:30 PM – 12:45 PM	Poster Session 2: Set-up	Ballroom D/E

## 12:45 PM – 2:15 PM Scientific Series A

Paper Session A1:	Paper Session A2:	Paper Session A3:	Paper Session A4:	Paper Session A5:	Symposium Session A6:
Meeting Room 551	Meeting Room 552B	Meeting Room 555	Meeting Room 556	Meeting Room 553	Meeting Room 552A
Childbearing and Women's Health	Palliative and End of Life Care	Adult and Older Adult	Bio-Behavioral Research	Child and Adolescent Health	Rhode Island Cohort of Adults Born Preterm: Findings & Implications from a Longitudinal Birth Cohort

12:45 PM – 2:15 PM	Funder & Senior Scientist 1:1 Appointments ( <i>by appointment only</i> )	Rotunda
2:30 PM – 3:15 PM	Poster Session 2: Meet the Researchers & Exposition Hall	Ballroom D/E
3:15 PM – 3:30 PM	Refreshment Break	Ballroom Pre-function

## 3:30 PM – 5:00 PM Scientific Series B

Paper Session B1:	Paper Session B2:	Paper Session B3:	Paper Session B4:	Symposium Session B5:	Symposium Session B6:
Meeting Room 551	Meeting Room 556	Meeting Room 555	Meeting Room 553	Meeting Room 552A	Meeting Room 552B
Childbearing and Women's Health	Chronic Illness	Technology and Informatics	Health Promotion Behaviors and Disease Prevention	The Path to Health Equity and Inclusion for Sexual and Gender Minority Populations through Nursing Science	Empowering Nurse Practitioners to Meet the Demand for Primary Care

3:30 PM – 5:00 PM	Funder & Senior Scientist 1:1 Appointments ( <i>by appointment only</i> )	Rotunda
5:15 PM – 6:00 PM	All Members Meeting	Ballroom A
5:45 PM – 6:00 PM	BS, MS, DNP, and Early PhD School Selected Poster and Emerging Clinical Research/Scholar Poster Set-up	Ballroom D/E
6:15 PM – 7:00 PM	BS, MS, DNP, and Early PhD School Selected Poster and Emerging Clinical Research/Scholar Poster Viewing, Awards & Welcome Reception <i>Sponsored by the University of Pittsburgh</i>	Ballroom D/E

# PROGRAM OF EVENTS

## FRIDAY, APRIL 1, 2022

6:30 AM – 8:00 AM	Grab and Go Breakfast	Ballroom Pre-function
6:30 AM – 3:30 PM	Exhibits	Ballroom Pre-function
7:00 AM – 12:00 PM	Registration	West Pre-function
7:45 AM – 8:00 AM	Poster Session 3: Set-up	Ballroom D/E
8:10 AM – 8:15 AM	Welcome & Update from Friends of the National Institute of Nursing Research (FNINR)	Ballroom A
8:15 AM – 9:15 AM	Plenary Panel Presentation	Ballroom A

### PLENARY PANEL PRESENTATION:

#### Intersectionality, Innovation and Nurses' Responsibility to Health Inequities in Research

During this Plenary Panel, panelists will take part in a conversation that will identify within existing nursing knowledge the experience and structure of the terminology applied to marginalized populations, distinguish the challenges posed to nurses engaged in research and work at the intersection of racial and social justice, health equity and public health, and formulate strategies to change policies, systems, and environments that promote civic engagement in nursing practice, science and health policy readiness.



#### Moderator:

**Mary Sullivan, PhD, RN, FAAN**  
Professor  
University of Rhode Island,  
College of Nursing



#### Panelists:

**Robert Atkins, PhD, RN, FAAN**  
Director, New Jersey Health Initiatives of  
Robert Wood Johnson Foundation  
Rutgers, The State University of New Jersey,  
School of Nursing – Camden



**Annette T. Maruca, PhD, RN-BC, CNE, CCHP**  
Clinical Professor  
University of Connecticut, School of Nursing



**Mitchell Wharton, PhD, RN, FNP-BC, CNS**  
Associate Professor of Clinical Nursing,  
Associate Dean for Equity and Inclusion  
University of Rochester, School of Nursing

### 9:30 AM – 11:00 AM Scientific Series C

Paper Session C1:	Paper Session C2:	Paper Session C3:	Paper Session C4:	Paper Session C5:	Symposium Session C6:
Meeting Room 555	Meeting Room 552A	Meeting Room 552B	Meeting Room 553	Meeting Room 551	Meeting Room 556
Social Determinants of Health	Quality & Safety	Health Promotion Behaviors and Disease Prevention	Mental Health, HCP	Nursing Education	Qualitative RIG Symposium: Nurse Scientists Thinking Outside the Box to Address Diversity and Qualitative Data Collection informed by a Pandemic



## FRIDAY, APRIL 1, 2022

11:15 AM – 12:00 PM	Poster Session 3: Meet the Researchers & Exposition Hall	Ballroom D/E
11:15 AM – 12:00 PM	Grab and Go Lunch	Ballroom Pre-function
12:00 PM – 1:30 PM	Funder & Senior Scientist 1:1 Appointments ( <i>by appointment only</i> )	Rotunda

### 12:00 PM – 1:30 PM Scientific Series D

Paper Session D1:	Paper Session D2:	Paper Session D3:	Paper Session D4:	Paper Session D5:	Symposium Session D6:
Meeting Room 556	Meeting Room 555	Meeting Room 552A	Meeting Room 552B	Meeting Room 553	Meeting Room 551
Organizational and Workforce Issues	Nursing Education	Organizational and Workforce Issues	Organizational and Workforce Issues	Childbearing and Women's Health	Charting a Diverse Path Toward Equity in Maternal Child Health by the Effect of the Social and Community Context

### 1:45 PM – 3:15 PM Scientific Series E

Paper Session E1:	Paper Session E2:	Paper Session E3:	Paper Session E4:	Symposium Session E5:
Meeting Room 551	Meeting Room 555	Meeting Room 553	Meeting Room 552A	Meeting Room 552B
Organizational and Workforce Issues	Chronic Illness	LGBTQIA Health	Mental Health, Patient	Examining Strategies to Promote Health Equity for Persons with an Incarceration Experience

2:45 PM – 3:15 PM	Funder & Senior Scientist 1:1 Appointments ( <i>by appointment only</i> )	Rotunda
3:30 PM – 3:50 PM	Student Peer-Reviewed Paper/Poster Awards and Closing Remarks	Ballroom A
3:50 PM	Adjournment	



### 2022 ENRS CONFERENCE SCHOLARSHIP RECIPIENTS

- Leann Balcerzak, BSN, RN, University at Buffalo
- Gabriella DiMuro, Binghamton University
- Amy Goh, Boston College
- Shuyuan Huang, MPH, RN, Yale, School of Nursing
- Daryl Jucar, Villanova University
- Barbara Laganieri, MSN, RN, University of New Hampshire

**THURSDAY, MARCH 31, 2022****Poster Session I: Meet the Researchers****Ballroom D/E**

1. **A Qualitative Analysis on Communication Workflows Between Adult Day Service Centers and Primary Care Providers**  
Jie Zhong, New York University, Rory Meyers College of Nursing; Jonelle Boafu, New York University, Rory Meyers College of Nursing; Abraham Brody; Bei Wu; Tina Sadarangani, New York University, Rory Meyers College of Nursing
2. **The Relationship Between Sensory Impairments and Health Literacy in Older Adults: A Systematic Review**  
Laura Wallace, University of Pennsylvania, School of Nursing; Christine Bradway, University of Pennsylvania, School of Nursing; Pamela Cacchione
3. **Views and experiences of informal partner caregiving in heart failure: A meta-ethnography**  
Zequan Wang, University of Connecticut, School of Nursing; Christine Tocchi, University of Connecticut, School of Nursing
4. **Feasibility and Acceptability of a Mobile Phone App for Obtaining Daily Reports of Symptoms, Decision Making, and Self-Care**  
Shayleigh Dickson, University of Pennsylvania, School of Nursing; Julia Orchinik, University of Pennsylvania, Perelman School of Medicine; Douglas Wiebe, University of Pennsylvania, Perelman School of Medicine; Kenneth Freedland, Washington University, School of Medicine; Christopher Lee; Ercole Vellone, University of Roma Tor Vergata; Heleen Westland, University Medical Center Utrecht; Michelle van Rijn, University Medical Center Utrecht; Subhash Aryal, University of Pennsylvania, School of Nursing; Anna Stromberg, Linköping University; Tiny Jaarsma, Linköping University; Barbara Riegel, University of Pennsylvania, School of Nursing
5. **Social Support, Employment Status, and Portuguese Descent among Individuals with Heart Failure: A Secondary Analysis**  
Michelle Diane Whyte, University of Massachusetts, Dartmouth College of Nursing and Health Sciences; Kristen Sethares, University of Massachusetts, Dartmouth College of Nursing and Health Sciences; Cheryl Westlake, Memorial Care Health System
6. **Addressing Adolescent Substance Use Through the Integration of SBIRT into a Primary Care Clinic: A Quality Improvement Project**  
Brandi Peachey, The Pennsylvania State University, Ross and Carol Nese College of Nursing
7. **Associations of Asthma Self-Management and Mental Health in Adolescents: A Scoping Review**  
Sarah I. Leonard, Columbia University, School of Nursing; Karen MacDonell, Wayne State University; John Usseglio, Columbia University, Irving Medical Center; Eleanor Turi, Columbia University, School of Nursing; Jennifer Powell, Medical University of South Carolina; Jean-Marie Bruzzese, Columbia University, School of Nursing
9. **Implications of Preoperative Expectations on Postoperative Satisfaction Among Caregivers of Children with Cerebral Palsy Undergoing Hip or Spine Surgery**  
David Geyer, Boston College, William F. Connell School of Nursing; Judith Vessey; Anna Chen, Boston College, William F. Connell School of Nursing; Rachel DiFazio
11. **Thai Novice Nurses' Lived experiences and Perspectives of Breastfeeding and Human milk in the Neonatal Intensive Care Unit (NICU)**  
Tippawan Srichalerm, University of Massachusetts, Amherst Institute for Applied Life Sciences and College of Nursing
12. **The Impact of Multiple Media Exposures and School Climate on Youth E-cigarette Use**  
YanJun Zhou, University at Buffalo, The State University of New York School of Nursing; Weijun Wang, University at Buffalo, The State University of New York School of Nursing; Leann Balcerzak, University at Buffalo, The State University of New York School of Nursing; Yu-Ping Chang, University at Buffalo, The State University of New York School of Nursing
13. **The Impact of Social Media on Substance Abuse in Adolescent: A Narrative Review**  
Olayemi Adekeye, The Pennsylvania State University, Ross and Carol Nese College of Nursing; Ying-Ling Jao, The Pennsylvania State University
14. **The Role of Depression, Sleep, and Media Use in Youth Electronic Cigarette Use**  
Leann Balcerzak, University at Buffalo, The State University of New York School of Nursing; Weijun Wang, University at Buffalo, The State University of New York School of Nursing; YanJun Zhou, University at Buffalo, The State University of New York School of Nursing; Yu-Ping Chang, University at Buffalo, The State University of New York School of Nursing
15. **Understanding Adolescent Organ and Tissue Donation Decisions Using a Qualitative Descriptive Design: A-DONOR Study**  
Aaina Smelko, The Pennsylvania State University, Ross and Carol Nese College of Nursing; Cynthia Russell
16. **Understanding the Prevalence and Characteristics of Weight Stigma Among Pediatric Health Care Providers: An Integrative Review**  
Samantha Turner, University of Massachusetts, Medical School Graduate School of Nursing
17. **Youth and Parent Experiences of Healthcare Transition: A Qualitative Metasynthesis**  
Katherine South, Columbia University, School of Nursing; Arlene Smaldone; Christine DeForge; Carol Anne Celona; Maureen George, Columbia University, School of Nursing



18. **Barriers and Facilitators of Breastfeeding in Women on Opioid Maintenance Therapy**  
Meg Doerzbacher, University at Buffalo, The State University of New York School of Nursing; Mickey Sperlich, University At Buffalo; Amy Hequembourg, University at Buffalo, The State University of New York School of Nursing; Yu-Ping Chang, University at Buffalo, The State University of New York School of Nursing
19. **Breastfeeding Promotion among African American Women in the United States: Inclusive Role of the Black Church**  
Adwoa Gyamfi, University of Connecticut, School of Nursing; Ruth Lucas; Barbara O'Neill; Diane L. Spatz; Wendy Henderson
20. **Correlates of Depressive Symptoms Among Foreign-Born U.S. Mothers in the First Two Years Postpartum: A Population Analysis**  
Grace George, University of Delaware, School of Nursing; Benjamin Brewer, University of Delaware; Freda Patterson, University of Delaware; Ju Young Shin, University of Delaware, School of Nursing
21. **The Effect Maternal Psychosocial State on Human Milk Composition**  
Tegemea Mwalingo, University of Massachusetts, Amherst Institute for Applied Life Sciences and College of Nursing; Carrie-Ellen Briere, University of Massachusetts, Amherst Institute for Applied Life Sciences and College of Nursing
22. **Southeast and East Asian Immigrant Women's Transnational Postpartum Experiences: A Meta-Ethnography**  
Timothea Vo, University of Connecticut, School of Nursing
23. **Parenting Experiences and Outcomes Among Former Adolescent Mothers: A Mixed Methods Study**  
Serena Flaherty, Yale, School of Nursing; M. Tish Knobf; La Ron Nelson; Margaret Holland; Arietta Slade; Lois Sadler
24. **How Much Physical Activity is Needed for Middle-Old and Old-Old Adults**  
Chunfang Chen, University of Massachusetts, Amherst Institute for Applied Life Sciences and College of Nursing
25. **A Concept Analysis of Routines to Improve Health Behaviors**  
Sunny Yoo Ruggeri, University of Missouri, Kansas City School of Nursing and Health Studies; Cynthia Russell
26. **A Systematic Review of Factors that Influence Hypermasculinity Among Emerging Adult Men**  
Teri Aronowitz, University of Massachusetts, Boston College of Nursing and Health Sciences
28. **Reaching Communities through the Designing Information Visualizations (ReDIVis) Toolbox for Returning COVID-19 Results and Addressing Vaccine Hesitancy and Uptake: Findings from Qualitative Interviews and Focus Groups**  
Kylie Dougherty, Columbia University; Niurka Suero-Tejeda, Columbia University, School of Nursing; Adriana Arcia; Maureen George, Columbia University, School of Nursing; Suzanne Bakken
30. **Voices from Young Adults: Perceptions about Electronic Cigarette Use**  
Yanjun Zhou, University at Buffalo, The State University of New York School of Nursing; Eunhee Park; Yu-Ping Chang, University at Buffalo, The State University of New York School of Nursing
31. **"Perspectivism": A Promising Step for Evaluating Health Inequity in Substance Use Treatment Spaces among African American/Black and Latino Persons Living with HIV in New York City.**  
Genevieve Guillaume, New York University, Rory Meyers College of Nursing; Maya Clark-Cutaia, New York University, Rory Meyers College of Nursing; Marya Gwadz, New York University, Rory Meyers College of Nursing
32. **Older Adults with Dementia Who Live Alone: A Cross-Sectional Analysis of Predisposing, Enabling, and Need Factors**  
Cristina de Rosa, University at Buffalo, The State University of New York School of Nursing; Suzanne Sullivan
33. **An Integrative Review of African American Experiences with Mindfulness Interventions for Mental Health**  
Leann Balcerzak, University at Buffalo, The State University of New York School of Nursing; Yu-Ping Chang, University at Buffalo, The State University of New York School of Nursing
34. **Examination of Existing Treatments for Individuals with Misophonia**  
Shayna Feuer, Columbia University, Irving Medical Center; Samantha Levy, Columbia University, Irving Medical Center; Bailey Walters, Columbia University, Irving Medical Center
35. **Narrative Review of Mindfulness to Reduce Alcohol Misuse**  
Rebecca Bausinger, The Pennsylvania State University, Ross and Carol Nese College of Nursing
36. **Telemental Health Conceptual Analysis**  
Gwendolyn Morris, Villanova University, M. Louise Fitzpatrick College of Nursing; Linda Copel
38. **The Effectiveness of Nurse Practitioner Care for Patients With Mental Health and Substance Use Disorders in Primary Care: A Systematic Review**  
Eleanor R. Turi, Columbia University, School of Nursing; Supakorn Kueakomoldej Columbia University, School of Nursing; Amy McMenamin, Columbia University, School of Nursing; Lusine Poghosyan, Columbia University, School of Nursing

39. **Considerations for End-of-Life Care to Persons with Severe and Persistent Mental Illnesses**  
Kiernan Riley, The Pennsylvania State University, Ross and Carol Nese College of Nursing; Judith Hupcey, The Pennsylvania State University
40. **Connect for Caregivers: A Qualitative Study to Understand the Social Connections of Caregivers of an Individual With Alzheimer's/Dementia**  
Melanie D. Bobry, University of Rochester, School of Nursing; Rachel Carter, University of Rochester, Warner School of Education; Marian Moskow, University of Rochester, School of Nursing; Kimberly Van Orden, University of Rochester, School of Medicine and Dentistry; Sally Norton, University of Rochester, School of Nursing
41. **The Acceptability of a Theory Guided Journaling Intervention in Simulation-Based Education with Undergraduate Students**  
Julianne A. Walsh, Dartmouth, College of Nursing and Health Sciences; Kristen Sethares, University of Massachusetts, Dartmouth College of Nursing and Health Sciences
42. **Adaptation and Testing of the Developmental Disability Attitudes in Nursing Care Instrument**  
Melissa Bourne, St. John Fisher College Wegmans, School of Nursing; Suzanne Smeltzer, Villanova University, M. Louise Fitzpatrick College of Nursing; Michelle Kelly, Villanova University, M. Louise Fitzpatrick College of Nursing
43. **Exploring the Use of Humanistic Learning Theory in PhD Nursing Education**  
Danielle DeGonge, University of Massachusetts, Dartmouth College of Nursing and Health Sciences
44. **Preparing Undergraduate Nursing Students for End-of-Life Care within Undergraduate Curriculum**  
Kalei Harleigh Kowalchik, The Pennsylvania State University, Ross and Carol Nese College of Nursing; Judith Hupcey, The Pennsylvania State University
45. **The Use of Interactive Technology to Enhance Student Accuracy on Electrocardiographic Interpretation**  
Dillon Dzikowicz, University of Rochester, School of Nursing; Mary Carey
46. **An Educational Needs Assessment Identifying Opportunities to Improve Sepsis Care**  
Tammy Davino, University of Connecticut, School of Nursing; Thomas Van Hoof, University of Connecticut, School of Nursing; Joy Elwell; Michelle DeLayo
47. **Use of the Self- and Family Management Framework in Quantitative Research Studies**  
Jae Hyung Park, New York University, Rory Meyers College of Nursing; Lynda Rada, New York University, Rory Meyers College of Nursing; Shelli Feder; Anna-Rae Montano; Janene Batten; Hui Tan; Margaret Grey; Dena Schulman-Green
48. **An Analysis of Cognitive Evaluation Theory**  
Yuri Choi, University of Rochester, School of Nursing; Marie Flannery
49. **Intention to Stay for New to Practice Nurses: A Theory Synthesis in the Interpersonal Domain**  
Natasha Chen, University of Massachusetts, Dartmouth College of Nursing and Health Sciences; Susan Hunter Revell
50. **Structural Capabilities in Primary Care Practices where Nurse Practitioners Care for Persons Living with Dementia**  
Vaneh Hovsepian, Columbia University, School of Nursing; Ani Bilazarian; Jianfang Liu, Columbia University, School of Nursing; Amelia Schlak, Columbia University, School of Nursing; Grant Martsof, University of Pittsburgh; Lusine Poghosyan, Columbia University, School of Nursing; Tatiana Sadak, Villanova University
51. **Effect of Collaborative Care Models on Primary Care Provider Outcomes: An Integrative Review**  
Ashleigh Holmes, University at Buffalo, The State University of New York School of Nursing; Yu-Ping Chang, University at Buffalo, The State University of New York School of Nursing
52. **Demographic and Socioeconomic Factors Associated with Healthcare Utilization Among U.S. Adults with Rheumatoid Arthritis**  
Elizabeth Hathaway, University of Rhode Island, College of Nursing; Jungeun Lee, University of Rhode Island, College of Nursing
53. **Improved Patient Safety Measures Following Oral Anti-Cancer Order Template and Workflow Implementation**  
Andrea Moran, The University of Connecticut, School of Nursing; Joy Elwell; Lisa Holle, University of Connecticut, School of Pharmacy; Karen Hook, University of Connecticut, School of Medicine
54. **Exploring Jordanian Emergency Registered Nurses' Experiences of Violence Initiated by Patients or Patients' Relatives in Jordan: A Phenomenological Study**  
Mahmoud M. Al-Qadi, University of Connecticut, School of Nursing
55. **Internationally Educated Nurses Who Migrate to the United States: A Narrative Review**  
Sherif A. A Olanrewaju, The Pennsylvania State University, Ross and Carol Nese College of Nursing; Susan Loeb, The Pennsylvania State University, Ross and Carol Nese College of Nursing; Manuel Rosaldo, The Pennsylvania State University, School of Labor and Employment Relations

**56. Nurses' Intuition in Clinical Practice: An Implicit Cognitive Process**

Yu-Ching Yang, University of Rochester, School of Nursing; Karen Stein

**58. Workplace Violence in Nursing: A Concept Analysis**

Mahmoud M. Al-Qadi, University of Connecticut, School of Nursing

**59. Patient Safety and Quality in Hospitals and Nursing Homes: How were U.S. Healthcare Systems Faring in the Months Preceding the COVID-19 Pandemic**

Kathleen Rosenbaum, University of Pennsylvania, School of Nursing; Rachel French, University of Pennsylvania, School of Nursing

**60. Identifying Patients with Sickle Cell Disease: How are Diagnosis Codes Used to Identify Patients with Sickle Cell Disease During Hospitalizations?**

Kathleen Rosenbaum, University of Pennsylvania, School of Nursing

**Paper Session A1: Childbearing and Women's Health**

**Meeting Room 551**

**12:45 PM      Becoming a Mother During the COVID-19 Pandemic: A Time of Resilience and Reflection**

Karen Mancini, Adelphi University, College of Nursing and Public Health

**1:03 PM      Antenatal Cannabis Use: A Feasibility Study**

Ruth F. Lucas, University of Connecticut, School of Nursing; Heather Evans; Pornpan Srisopa

**1:21 PM      Postpartum experiences during the first wave of COVID-19 from the patient perspective**

Rachel Berman, University of Maryland, School of Nursing; Carrie Neerland, University of Minnesota, School of Nursing; Stacey Iobst, Towson University; Adriane Burgess, WellSpan Health

**1:39 PM      Informal Milk Sharing in the Orthodox Jewish Community: A Phenomenological Exploration**

Toby Bressler, Mount Sinai Health System

**1:57 PM      Diversity in Breastfeeding Social Support: The Lived Experience of African American Christians in the New England Region**

Adwoa Gyamfi, University of Connecticut, School of Nursing; Barbara O'Neill; Ruth Lucas, University of Connecticut, School of Nursing; Diane L. Spatz, University of Pennsylvania, School of Nursing; Wendy Henderson

**Paper Session A2: Palliative and End of Life Care**

**Meeting Room 552B**

**12:45 PM      Expert Consensus-Based Guidance on Approaches to Opioid Management in Individuals with Advanced Cancer-Related Pain and Opioid Misuse and Opioid Use Disorder: Results of a Delphi Study**

Katie Fitzgerald Jones, Boston College, William F. Connell School of Nursing; Jessica Merlin, University of Pittsburgh, Center of Palliative Care and Medical Ethics; Hailey Bulls, University of Pittsburgh, Center of Palliative Care and Medical Ethics; Judith Paice, Northwestern University

**1:03 PM      Nurse Practitioners in an Academic Clinical Partnership Deliver Equitable End of Life Care to Medically Underserved Patients with Complex Chronic Illnesses**

Denise Coppa, University of Rhode Island, College of Nursing; Suzy Barcelos Winchester, University of Rhode Island, College of Nursing

**1:21 PM      Hospice Delivery in Rural Areas: Providers' Perspectives**

Lisa Kitko, Penn State University, Ross and Carol Nese College of Nursing; Elizabeth Thiede

**1:39 PM      A Regional Evaluation of Nursing Home Palliative Care for Black and Hispanic Residents**

Leah V. Estrada, Columbia University, School of Nursing; Jordan Harrison, RAND Corporation; Andrew Dick, RAND Corporation; Patricia Stone

**1:57 PM      Palliative Care, Hospice, and End of Life Exemptions to State Laws Regulating Opioid Prescribing**

Katie Fitzgerald Jones, Boston College, William F. Connell School of Nursing; Hailey Bulls, University of Pittsburgh, Center of Palliative Care and Medical Ethics; Jessica Merlin, University of Pittsburgh, Center of Palliative Care and Medical Ethics

**Paper Session A3: Adult and Older Adult****Meeting Room 555**

- 12:45 PM**      **Experiences of Ghanaian and Ghanaian Diaspora Stroke Survivors and Family Caregivers among Ghanaians and the Ghanaian Diaspora**  
Keville Frederickson, Pace University; Angela Adjety, Pace University, Leinhard School of Nursing; Ebony Samuel-Bakpessi, Pace University, Leinhard School of Nursing; Rhonda Maneval
- 1:03 PM**      **Characteristics of individuals with Alzheimer's Disease and Related Dementias Receiving Home Healthcare: A Matched Analysis**  
Zainab Totah Osakwe, Adelphi University, College of Nursing and Public Health; Chineduuzoamaka Obioha, Adelphi University College of Nursing and Public Health; Rose Saint Fleur-Calixte
- 1:21 PM**      **An Examination of Cognitive Trajectories in Post-Acute Delirium Superimposed on Dementia**  
Rachel Elizabeth Arendacs, The Pennsylvania State University, Ross and Carol Nese College of Nursing; Marie Boltz, The Pennsylvania State University, Ross and Carol Nese College of Nursing; Ann Kolanowski, The Pennsylvania State University, Ross and Carol Nese College of Nursing
- 1:39 PM**      **The Symptom Experience of Older Adults with Mobility Limitations**  
Michelle A. McKay, Villanova University, M. Louise Fitzpatrick College of Nursing; Alexis Cohn, Villanova University, M. Louise Fitzpatrick College of Nursing; Melissa O'Connor, Villanova University, M. Louise Fitzpatrick College of Nursing
- 1:57 PM**      **Older Adults Outdoor Activity Engagement Prior to and During the COVID-19 Pandemic**  
Justine Suzette Sefcik, Drexel University, College of Nursing and Health Professions; Danielle Katsev, Drexel University, College of Nursing and Health Professions; Amita Panicker, Drexel University, College of Nursing and Health Professions; Annalisa Na, Duquesne University, School of Nursing; Sherry Greenberg, Seton Hall University, College of Nursing; Rose Ann DiMaria-Ghalili, Drexel University, College of Nursing and Health Professions

**Paper Session A4: Bio-Behavioral Research****Meeting Room 556**

- 12:45 PM**      **Linkage Between the Gut Microbiota and Host Transcriptomic Among Young Adults with Irritable Bowel Syndrome: A Multi-Omics Approach**  
Jie Chen, University of Maryland, School of Nursing; Yiming Zhang; Tingting Zhao, University of Connecticut, School of Nursing; Wanli Xu; Angela Starkweather, University of Connecticut; Susan Dorsey, University of Maryland, School of Nursing; Xiaomei Cong, University of Connecticut
- 1:03 PM**      **Longitudinal Association of Physical Activity and Inflammatory Markers With Quality of Life in Head and Neck Cancer Patients**  
Shuyuan Huang, Yale, School of Nursing; Sangchoon Jeon; Deborah Bruner, Emory University, Nell Hodgson Woodruff School of Nursing; Andrew Miller, Emory University, School of Medicine; Jennifer Felger, Emory University, School of Medicine; Evanthia Wommack, Emory University, School of Medicine; Nabil Saba, Emory University, School of Medicine; Kristin Higgins, Emory University, School of Medicine; Canhua Xiao, Emory University, Nell Hodgson Woodruff School of Nursing
- 1:21 PM**      **A Randomized Controlled Trial Examining the Effects of Behavioral Weight Loss Treatment on Neurocognition and Eating Behaviors**  
Ariana Chao, University of Pennsylvania, School of Nursing; Yingjie Zhou, University of Pennsylvania, School of Nursing; Thomas Wadden, University of Pennsylvania, School of Nursing
- 1:39 PM**      **Exploring Associations Between Dietary Intake and Fatigue in Adults with Metabolic Syndrome**  
Fay Wright, New York University, Rory Meyers College of Nursing; Jason Fletcher, New York University, Rory Meyers College of Nursing; Victoria Vaughan Dickson, New York University, Rory Meyers College of Nursing; Gail Melkus
- 1:57 PM**      **Associations Between Painful Procedures, Telomere Length and Neurodevelopment**  
Sharon Casavant, University of Connecticut, School of Nursing; Hongfei Li, University of Connecticut, Statistics Department; Yiming Zhang; Xiaomei Cong, University of Connecticut

## Paper Session A5: Child and Adolescent Health

Meeting Room 553

- 12:45 PM**      **Young Adult Cancer Survivors' Perceptions of Medical Crowdfunding**  
Lauren Victoria Ghazal, University of Michigan, School of Nursing; Sheila Santacroce
- 1:21 PM**      **"They're scared that somebody's gonna judge them." Females in Foster Care Preferences for Effective Sexual and Reproductive Health Communication**  
Christina Ross, University of Connecticut, School of Nursing; Jessica G Smith; Marcie Gawel; Xiaomei Cong; Natalie Shook
- 1:39 PM**      **The 2018 School Health Profiles Survey: School Health Services for Children with Chronic Health Conditions in California Public Secondary Schools**  
Ellen M. McCabe, Hunter Bellevue, School of Nursing; Beth Jameson; Shiela Strauss
- 1:57 PM**      **The Lived Experience of Growing Up with a Sibling who has Down Syndrome**  
Patricia Sciscione, Monmouth University, Marjorie K. Unterberg School of Nursing and Health Studies

## Symposium A6: Rhode Island Cohort of Adults Born Preterm: Findings & Implications from a Longitudinal Birth Cohort

Meeting Room 552A

- 12:45 PM**      **Growth Trajectories & Cardiometabolic Risk at Age 23 Years**  
Amy D'Agata, University of Rhode Island, College of Nursing; Michelle Kelly, Villanova University, M. Louise Fitzpatrick College of Nursing; Pamela Brewer, University of Rhode Island, College of Nursing; Mary Roberts, Brown Center for Primary Care and Prevention; Mary C. Sullivan, University of Rhode Island, College of Nursing
- 1:03 PM**      **The Cardiovascular & Ventilatory Systems Response to Exercise Stress in 23-year-old Preterm Born Adults**  
Pamela Brewer, University of Rhode Island, College of Nursing; Amy D'Agata, University of Rhode Island, College of Nursing; Patricia Mitchell, Rhode Island Hospital/Hasbro Children's Hospital; Mary C. Sullivan, University of Rhode Island, College of Nursing
- 1:21 PM**      **The Influence of Environment & Medical Risk on Internalizing and Externalizing Behaviors from Preschool to Young Adulthood**  
Michelle Kelly, Villanova University, M. Louise Fitzpatrick College of Nursing; Amy D'Agata, University of Rhode Island, College of Nursing; Kimberly Arcoleo, University of Rhode Island, College of Nursing; Mary C. Sullivan, University of Rhode Island, College of Nursing
- 1:39 PM**      **Listening to Their Lives: Life Experiences of Preterm Born Adults at Age 30**  
Amy D'Agata, University of Rhode Island, College of Nursing; Carol Green, Brown Center for Primary Care and Prevention; Michelle Kelly, Villanova University, M. Louise Fitzpatrick College of Nursing; Mary C. Sullivan, University of Rhode Island, College of Nursing
- 1:57 PM**      **Preterm Birth History: Recommendations for Improving Health across the Life Course**  
Michelle Kelly, Villanova University, M. Louise Fitzpatrick College of Nursing; Amy D'Agata, University of Rhode Island, College of Nursing; Mary C. Sullivan, University of Rhode Island, College of Nursing

**Poster Session 2: Meet the Researchers****Ballroom D/E**

- 1. Capturing Physiologic Sleep Before, During, and After Critical Illness: A Feasibility Study**  
Makayla Cordoza, University of Pennsylvania, School of Nursing; Barbara Riegel, University of Pennsylvania, School of Nursing
- 2. Transitioning Sepsis Survivors: Using SEIPS Process Modeling for Implementation Science**  
Sungho Oh, University of Pennsylvania, School of Nursing; Elaine Sang, University of Pennsylvania, School of Nursing; Michael Stawnychy, University of Pennsylvania, School of Nursing; Melissa O'Connor, Villanova University, M. Louise Fitzpatrick College of Nursing; Teresa Cranston, Penn Medicine Lancaster General Health; Tanvi Kongara, University of Pennsylvania, The Wharton School; Erin Kennedy, University of Pennsylvania, School of Nursing; Patrik Garren, University of Pennsylvania, School of Nursing; Kathryn Bowles, University of Pennsylvania, School of Nursing
- 3. Symptoms Contributing to Mobility Limitations Among Older Adults Living in the Community**  
Michelle A. McKay, Villanova University, M. Louise Fitzpatrick College of Nursing; Janell Mensinger; Melissa O'Connor, Villanova University, M. Louise Fitzpatrick College of Nursing; Madison Utz, Villanova University, M. Louise Fitzpatrick College of Nursing; Alexander Costello, Villanova University, M. Louise Fitzpatrick College of Nursing; Suzanne Leveille, University of Massachusetts Boston
- 5. Night-time Sleep Disturbances and Daytime Sleepiness in Non-COVID-19 Infected Adults during the COVID-19 Pandemic**  
An-Yun Yeh, Hunter Bellevue, School of Nursing; Ying-Yu Chao, Rutgers, The State University of New Jersey, School of Nursing; Shiela Strauss
- 6. The Effect of Coping Interventions on Fatigue in Persons with Hematologic Malignancies: A Systematic Review and Narrative Synthesis**  
Lucy Andersen, University of Pennsylvania, School of Nursing; Connie Ulrich; Salimah Meghani; Jie Deng, University of Pennsylvania, School of Nursing
- 7. Using a Mixed-Method Approach to Further Examine Social Support related to Reproductive Health Behaviors in Female Adolescents with Diabetes**  
Hiba Abujaradeh, University of Pittsburgh, School of Nursing; Denise Charron-Prochownik; Susan Sereika
- 8. The Who, When, Why, & How of Pediatric Palliative Care Referrals: A Scoping Review**  
Katherine Bernier Bernier Carney, University of Connecticut, School of Nursing; George Goodrich, University of Connecticut, School of Nursing; Alfred Kiza, University of Connecticut, School of Nursing; Katie Hinderer, Connecticut Children's; Xiaomei Cong, University of Connecticut
- 9. School Readiness and Social Determinants of Health: An Academic/ Community Parent and Teacher Collaboration**  
Rahshida Atkins, The College of New Jersey; Janet Deatrick; Claire Bocage, University of Pennsylvania, School of Nursing; Danica Lagman, University of Pennsylvania, School of Nursing; Melanie Joseph, University of Pennsylvania, School of Nursing; Emily Beisser, University of Pennsylvania, School of Nursing; Dinah Kim; Afia Hinckson; Damilola Aromolaran; Regi Huc, Learning Central Preschool; Vivian L Gadsden, University of Pennsylvania, School of Nursing; Terri H Lipman, University of Pennsylvania, School of Nursing
- 10. Postpartum Sleep Loss: Investigating the Associations between Sleep, Health, and Human Milk Composition**  
Carrie-Ellen Briere, University of Massachusetts, Amherst Institute for Applied Life Sciences and College of Nursing
- 11. Maternal Coping in The Context of COVID-19**  
Alyssa O'Brien, University of New Hampshire, College of Health and Human Services; Patricia Louis, University of New Hampshire, College of Health and Human Services
- 12. The Pandemic Pregnancy Experience: A Mixed Methods Study**  
Jenna Alana LoGiudice, Fairfield University, Egan School of Nursing and Health Studies; Susan Bartos, Retia Medical
- 13. Implementation of Lactation Telehealth and Maternal Monitoring of Infant Weight during the COVID-19 Pandemic: A Quality Improvement Project**  
Diane J. DiTomaso, University of Rhode Island, College of Nursing; Kimberly Arcoleo, University of Rhode Island, College of Nursing
- 14. Predictors of Fertility Awareness-Based Method Use Among Women Trying to Conceive and Women Contemplating Pregnancy**  
Melissa Perez Capotosto, Boston College, William F. Connell School of Nursing; Corrine Jurgens, Boston College, William F. Connell School of Nursing; Christopher Lee, Boston College; Brittany Charlton, Harvard T.H. Chan School of Public Health; Jorge Chavarro, Harvard T.H. Chan School of Public Health; Siwen Wang, Harvard T.H. Chan School of Public Health
- 15. A Qualitative Metasynthesis of the Experience of Fatigue Across Five Chronic Conditions**  
Rosario B. Jaime-Lara, National Institute of Nursing Research, National Institute on Alcohol Abuse and Alcoholism; Brittany Koons; Lea Ann Matura; Nancy Hodgson; Barbara Riegel, University of Pennsylvania, School of Nursing



16. **Primary Health Care Providers' Experiences with the "Pain intensity, Enjoyment of Life, and General Activity" (PEG) Scale for the Management of Chronic Pain**  
Andrea Burdon, University of Rhode Island, College of Nursing
17. **The Lived-experience of Patient Adoption and Adaptation to Closed-loop Insulin Pump Systems**  
Chrystina Manero, University of Massachusetts, Medical School Graduate School of Nursing
18. **Voices from Across the Digital Spectrum: Perceptions and Experiences of Persons with Type 2 Diabetes Mellitus During the COVID-19 Pandemic**  
Daryl Angela Jucar, Villanova University, M. Louise Fitzpatrick College of Nursing; Christina Whitehouse, Villanova University, M. Louise Fitzpatrick College of Nursing
19. **Parents of Adult Children with Autism: Hopes and Dreams for an Adult Child's Engaged Late Life**  
Connie Kartoz, The College of New Jersey; Munira Wells, Seton Hall University, College of Nursing; Sara Munoz, The College of New Jersey
20. **Effect of the Novel Coronavirus Disease (COVID-19) Pandemic on Patients' Self-management of Chronic Diseases (Hypertension and Diabetes)**  
Tomisin Olayinka, MGH Institute of Health Professions
22. **COVID-19 Vaccine Uptake among Medicare Beneficiaries**  
Jungeun Lee, University of Rhode Island, College of Nursing; Omorinola Oladosu, University of Rhode Island, College of Nursing; Jackie Peschko, University of Rhode Island, College of Nursing
23. **Experiences of Food Insecure College Students During the COVID-19 Pandemic**  
Amy Kendrick, University of Massachusetts
24. **Mete Tèt Nou Ansanm (Putting Our Heads together): Global Health Capacity Building Within Short-term Medical Missions**  
Tara Casimir, University of Southern Maine, School of Nursing
25. **Perceptions of Health and Illness of Russian-Speaking Immigrants**  
Polina Amburg, Monmouth University, Marjorie K. Unterberg School of Nursing and Health Studies
27. **Navigating an Unpredictable Journey: A Constructivist Grounded Theory Study of the Experiences of Dementia Caregivers**  
Suzanne Parkman, University of Southern Maine, School of Nursing
28. **Major Depressive Disorder and Coronary Artery Disease: An Integrative Review**  
Brian Reeves, St. John Fisher College
29. **Evidence Base for Improving Healthcare Communication with Adults affected by an Autism Spectrum Disorder**  
Connie Kartoz, The College of New Jersey; Sara Munoz, The College of New Jersey; Munira Wells, Seton Hall University, College of Nursing
30. **Anti-Asian Sentiment's impact on Mental Health Outcomes during the COVID-19 Pandemic**  
Tania T. Von Visger, University at Buffalo, The State University of New York School of Nursing; Yu-Ping Chang, University at Buffalo, The State University of New York School of Nursing; Eunhee Park; Yanjun Zhou, University at Buffalo, The State University of New York School of Nursing; Amy Lyons
31. **Exploring the Experience of Depression Among Low-Income and Ethnic Minority Mothers from Low-Resourced Communities**  
Rahshida Atkins, The College of New Jersey; Katie Hooven, The College of New Jersey; Natasha Patterson, The College of New Jersey; Daniella Gadaleta; Sangita Pudasainee-Kapree, Rutgers University, School of Nursing; Abby Dmello, The College of New Jersey; Shanda Johnson, New Jersey City University; Gale Gage, Essex County College
32. **Parents/Caregivers' Experiences of Youth Suicide Crises: A Qualitative Study**  
Guy Weissinger, Villanova University, M. Louise Fitzpatrick College of Nursing; Lili Evans, Villanova University; Michaelyn Morgan, Villanova University
33. **The Impact of the Length of Shelter-In-Place on Psychological Well-Being in Non-COVID-19 Infected Adults During COVID-19 Pandemic**  
Ying-Yu Chao, Rutgers, The State University of New Jersey, School of Nursing; An-Yun Yeh, Hunter Bellevue School of Nursing
35. **Mentoring and Incentivizing Community Members as Coauthors in Community-Engaged Research**  
Karen T. D'Alonzo, Rutgers, The State University of New Jersey, School of Nursing
36. **Factors Promoting Positive Attitudes Toward Older Adults in Baccalaureate Nursing Students: An Integrative Review**  
Kristin Corey Magan, University of Rhode Island, College of Nursing; Stephanie Ricci, University of Rhode Island, College of Nursing; Elizabeth Hathaway, University of Rhode Island, College of Nursing

37. **A 10-Year Examination of a One-on-One Grant Writing Partnership for Nursing Pre- and Post-doctoral Trainees**  
Kristine Kulage, Columbia University, School of Nursing; Elizabeth Corwin, Columbia University, School of Nursing; Rebecca Schnall; Arlene Smaldone; Kodiak Soled; John Usseglio, Columbia University, Irving Medical Center; Elaine Larson
38. **Impact of the COVID-19 Pandemic on Nursing Education, Student and Faculty Challenges, and Creative Strategies to Promote Learning for Community Health Nursing Students: Benefits of YMCA Clinical Experiences which Promote Diversity, Equity and Inclusion**  
Kathleen Sternas, Seton Hall University, College of Nursing
39. **Improving Students Assignments Scores and Educational Environment in Maternal Health Course Through Hybrid Learning**  
Majeda M. El-Banna, The George Washington University, School of Nursing; Eman Alshawish, An-Najah National University; Intima Arimawi, School of Nursing and Health Professions
40. **Innovative and Diverse Strategies to Implement Inclusive DNP Projects to Meet Organization Strategic Goals and Advance Healthcare Equity**  
Majeda M. El-Banna, The George Washington University, School of Nursing; Karen Kesten
41. **Building Resilience among Pre-nursing Major Students: A Mixed-Method Study**  
Nellipher Lewis Lewis Mchenga, Fitchburg State University; Christine Devine; Deborah Benes, Fitchburg State University
42. **Improving self-care practices for graduate nursing students**  
Kathryn Phillips, Fairfield University, Egan School of Nursing and Health Studies
43. **Preparing Nurses to Care for Research Participants during the COVID-19 Pandemic using Rapid Cycle Quality Improvement Framework**  
Karen Fitzgerald, Good Samaritan Hospital; Patricia Eckardt, Good Samaritan Hospital
44. **Evidence-Based Strategies for Successful Catheter-Associated Urinary Tract Infection Reduction Hospital-Wide: Nurse-Driven Protocol**  
Jean McHugh, The State University of New York Downstate Health Sciences University, College of Nursing,
45. **An Integrative Review: Exploring Mentoring Activities for Underrepresented High School Students to Increase Awareness of the Profession of Nursing**  
Yolanda Maurice Nelson, The College of New Jersey; Gabrielle Wells, The College of New Jersey; Darita Parreott, The College of New Jersey
46. **National Institutes of Health Funding for Violence Related Research from 2011-2020**  
Jocelyn Anderson, The Pennsylvania State University, Ross and Carol Nese College of Nursing; Candace Burton, University of California Irvine, Sue and Bill Gross School of Nursing; Jessica Draughon Moret, University of California Betty Irene Moore School of Nursing; Casey DiCampi, The Pennsylvania State University, Ross and Carol Nese College of Nursing; Jessica Williams
47. **The Impact of Medical Mistrust on Antiretroviral Therapy in African Americans/Blacks with HIV in the United States**  
Larissa Richard, The Pennsylvania State University, Ross and Carol Nese College of Nursing; Oluwamuyiwa Adebayo
48. **Assessing the Role of Structural Capabilities in Primary Care Practices in Alleviating Nurse Practitioner Burnout, Job Dissatisfaction, and Intent to Leave**  
Amelia Schlak, Columbia University, School of Nursing; Lusine Poghosyan, Columbia University, School of Nursing; Billy Rosa; Jianfang Liu, Columbia University, School of Nursing; Grant Martsof, University of Pittsburgh; Julius Chen, Columbia University, School of Nursing
49. **Nurse-Physician Collaboration during Rounds: What is the Impact on the Nurse?**  
Martha DeCesere, Saint Joseph's College of Maine
50. **Research Aims and Recommendations about Nurses on Boards: A Scoping Review**  
Lisa Joy Sundean, Fairfield University, Egan School of Nursing and Health Studies; Peris Gatiba, University of Massachusetts, Boston College of Nursing and Health Sciences
51. **Perceptions of Medical Mistrust held by Black Americans and its Impact on End-of-Life Care Decisions**  
Elizabeth Willome, St. John Fisher College Wegmans, School of Nursing
52. **Assessing Preferences for Technology-Assisted Communication: A Person-Centered Approach in the Context of a Pandemic (P-TAC Pandemic)**  
Andrea Sillner, The Pennsylvania State University, Ross and Carol Nese College of Nursing; Marie Boltz, The Pennsylvania State University, Ross and Carol Nese College of Nursing; Kimberly Van Haitsma
53. **Identifying Patients with Hypoglycemia Using Natural Language Processing: A Systematic Literature Review**  
Yaguang Zheng, New York University, Rory Meyers College of Nursing; Victoria Vaughan Dickson, New York University, Rory Meyers College of Nursing; Saul Blecker, New York University, Langone Health; Jason M. Ng, University of Pittsburgh, Department of Medicine; Brynne Campbell Rice, New York University Libraries; Liat Shenkar, New York University, Rory Meyers College of Nursing; Marie Claire R. Mortejo, New York University, Rory Meyers College of Nursing; Stephen B. Johnson, New York University, Langone Health



- 54. Design of a Virtual Environment for CVD Prevention Education in Sexual Minority Men of Color Living with HIV**  
S. Raquel Ramos, Yale, School of Nursing; Harry Kim, New York University, Rory Meyers College of Nursing; Gabriela Valdiglesias, University of Connecticut, School of Nursing; Christopher Macaraeg, New York University Langone Health; Chase Williams, Mount Sinai Health System; Gabriela Almada Ackel, New York University
- 55. DSP Thrive! A mHealth App to Promote Resilience in Direct Support Professionals of Adults with Intellectual and Developmental Disabilities**  
Mirinda Tyo, University of Massachusetts, Dartmouth College of Nursing and Health Sciences; Melissa Desroches, University of Massachusetts, Dartmouth College of Nursing and Health Sciences; Shelley Zhang, University of Massachusetts, Dartmouth Computer and Information Science
- 56. Transforming Challenges into Opportunities: Evidence-Based Strategies for Implementation of Technology into Synchronous High-Stakes Computerized Testing**  
Jean McHugh, The State University of New York Downstate Health Sciences University, College of Nursing

## Paper Session B1: Childbearing and Women's Health

Meeting Room 551

- 3:30 PM From Coal Miners to Nurses: A Project Using Sociotechnical Systems Theory to Evaluate the Work System of Obstetric Nurses**  
Samantha Bernstein, MGH Institute of Health Professions; Kenneth Catchpole, Medical University of South Carolina; Teresa Kelechi, Medical University of South Carolina; Lynne Nemeth, Medical University of South Carolina
- 3:48 PM Allostatic Load and Birth Weight among U.S. Hispanic/Latina Women: Findings from the HCHS/SOL**  
Stacia Birdsall, New York University, Rory Meyers College of Nursing
- 4:06 PM Effects of Fourth-Degree Perineal Lacerations on Women's Physical and Mental Health**  
Cheryl Tatano Beck, The University of Connecticut, School of Nursing
- 4:24 PM The Role of Race on Prenatal Care Experiences**  
Karen Aldana, Boston College, William F. Connell School of Nursing; Mary Simonelli, Boston College
- 4:42 PM Tobacco and Nicotine Use in the Perinatal Period. A Postpartum Video Intervention**  
Lauren Katz, Binghamton University; Wendi Gallagher, Binghamton University; Gabriella DiMuro, Binghamton University; Francesca Nugnes, Binghamton University; Karolina Smiechowski, Binghamton University; Sophia Guiliano, Binghamton University; Arielle Goldschmidt, Binghamton University; Julie Sbarra, Binghamton University; Geraldine Britton, Binghamton University; Kristin Pullyblank, Binghamton University

## Paper Session B2: Chronic Illness

Meeting Room 556

- 3:30 PM Decision-Making Among Family Caregivers of Chronically Ill Black Older Adults: A Phenomenological Study**  
Theresa Lundy, Lehman College, Department of Nursing
- 4:06 PM What Individuals Want to Hear at the Point of Type 2 Diabetes (T2D) Diagnosis**  
Michelle Boakye, The Pennsylvania State University, Ross and Carol Nese College of Nursing; Sheridan Miyamoto; Deborah Greenwood, University of Texas Health Science Center at San Antonio
- 4:24 PM Diabetes Self-Management Education and Support: A Quality Improvement Project to Increase Referrals**  
Lauren Eddy, University of Connecticut, School of Nursing; Annette Jakubisin Konicki, University of Connecticut, School of Nursing; Joy Elwell; Gretchen Edstrom, University of Connecticut, School of Nursing
- 4:42 PM Additive Interactions Between Asthma and Gender on Bullying Victimization among US High School Students**  
Sangita Pudasainee-Kapri, Rutgers, The State University of New Jersey, School of Nursing; Nancy Pontes; Manuel Pontes

## Paper Session B3: Technology and Informatics

Meeting Room 555

- 3:30 PM**      **MommaConnect mHealth: Extending Access to Evidenced-Based Therapy for Mothers With Postpartum Depression and Their Infants**  
Bobbie Posmontier, Thomas Jefferson, College of Nursing; June Horowitz; Pamela Geller; Tony Ma, Benten Technologies; Laura Mazurkewicz, Thomas Jefferson College of Nursing; Maria Priyma, Drexel University
- 3:48 PM**      **Pilot Study of a Medication Adherence Mobile Phone App Effects in Medically Underserved Patients with Chronic Illness**  
Christa Hartch, Vanderbilt University, School of Nursing; Deonni Stollendorf, Vanderbilt University, School of Nursing; Mary Dietrich, Vanderbilt University, School of Nursing
- 4:06 PM**      **Algorithm-Based Decision Support Development and Testing: Differences in Symptom Management Across the Trajectory of Cancer Care**  
Hayley Dunnack, The University of Connecticut, School of Nursing; Barbara Halpenny, Dana Farber Cancer Institute Cantor Center; Janet Abraham, Dana Farber Cancer Institute; David Lobach, Elimu Informatics; Mary Cooley
- 4:24 PM**      **Exploring Oncology Caregivers' Diverse Needs to Inform a Future Virtual Reality Experience**  
Susan Birkhoff, University of Pittsburgh, School of Nursing; Heidi Donovan; Young Ji Lee
- 4:42 PM**      **Testing of a Web-Based Platform for Antiretroviral Adherence Support of HIV-Infected Adolescents and Young Adults**  
Ann-Margaret Navarra, New York University, Rory Meyers College of Nursing; Maurade Gormley; Michael Rosenberg, Albert Einstein College of Medicine; Lloyd Goldsamt; Jason Fletcher, New York University, Rory Meyers College of Nursing; Allison Vorderstrasse, University of Massachusetts, Amherst Institute for Applied Life Sciences and College of Nursing

## Paper Session B4: Health Promotion Behaviors and Disease Prevention

Meeting Room 553

- 3:30 PM**      **Vaccine Hesitancy and COVID-19 Vaccination Decisions in Pre-licensure Nursing Students, Faculty and New Graduates: A National Study**  
Veronica D. Feeg, Molloy College, Barbara H. Hagan School of Nursing and Health Sciences; Jose Maria, Molloy College, Barbara H. Hagan School of Nursing and Health Sciences; Lincy Philip, Molloy College, Barbara H. Hagan School of Nursing and Health Sciences; Gaelle Clesca, Molloy College, Barbara H. Hagan School of Nursing and Health Sciences; Marcia Gardner; Diane Mancino
- 3:48 PM**      **It's What the Community Demands: Results of an Emergency Narcan Training Event**  
Daniel Smith, Villanova University, M. Louise Fitzpatrick College of Nursing; Sarah Febres-Cordero, Emory University, Nell Hodgson Woodruff School of Nursing; Abigail Wulkan, Emory University, Nell Hodgson Woodruff School of Nursing; Nicholas Giordano, Emory University, Nell Hodgson Woodruff School of Nursing
- 4:06 PM**      **Effectiveness of an Intervention Video Education Module for High School Students on Vaping and Other Nicotine Products**  
Samantha Cosme, Binghamton University; Shira Ellenbogen; Austen Hrynda; Christopher Felice, Binghamton University; Candace Kim, Binghamton University; Sydney Hoffman, Binghamton University; Kristin Pullyblank, Binghamton University; Wendi Gallagher, Binghamton University; Geraldine Britton, Binghamton University
- 4:24 PM**      **Discussion About Lung Cancer Screening Motivates Smokers to Make Quit Attempts**  
Hermine Poghosyan, Yale, School of Nursing
- 4:42 PM**      **Comparison of Vaping Knowledge, Beliefs and Behaviors Between High School and College Age Students**  
Kristin Pullyblank, Binghamton University; Geraldine Britton, Binghamton University; Rosemary Collier, Binghamton University; Wendi Gallagher, Binghamton University

## **Symposium Session B5: The Path to Health Equity and Inclusion for Sexual and Gender Minority Populations through Nursing Science**

**Meeting Room 552A**

- 3:30 PM**      **Collecting Sexual Orientation and Gender Identity Data in Nursing Research Studies and Projects: Results from a Pilot Study**  
Martha Greenberg, Pace University Leinhard, School of Nursing
- 3:48 PM**      **Examining the Associations of Sleep Duration and Inflammatory Cytokines in a Sample of Latinx Transgender and Nonbinary Adults**  
Joseph Belloir, Columbia University, School of Nursing
- 4:06 PM**      **Measures of Societal Stigma and Their Association to Components of Minority Stress Among Gender Minority People**  
Kristen Clark, University of New Hampshire, College of Health and Human Services
- 4:24 PM**      **The Role of Stress, Social Support and Resilience on the Mental Health of LGBTQ and non-LGBTQ Nurses**  
Shannon Avery-Desmarais, University of Massachusetts, Dartmouth College of Nursing and Health Sciences

## **Symposium Session B6: Empowering Nurse Practitioners to Meet the Demand for Primary Care**

**Meeting Room 552B**

- 3:30 PM**      **Nurse Practitioners Scope of Practice Regulations and Their Impact on Work Environments in Primary Care Settings**  
Lusine Poghosyan, Columbia University, School of Nursing; Jianfang Liu, Columbia University, School of Nursing; Grant Martsof, University of Pittsburgh; Jordan Stein, Columbia University, School of Nursing; Joanne Spetz, University of California, San Francisco
- 3:48 PM**      **Practice Patterns, Work Environments, and Job Outcomes of Rural and Urban Primary Care Nurse Practitioners**  
Hayley Germack, University of Pittsburgh, School of Nursing; Jordan Harrison, RAND Corporation; Grant Martsof, University of Pittsburgh; Lusine Poghosyan, Columbia University, School of Nursing
- 4:06 PM**      **Assessing the Role of Structural Capabilities in Primary Care Practices in Alleviating Nurse Practitioner Burnout, Job Satisfaction, and Intent to Leave**  
Amelia Schlak, Columbia University, School of Nursing; William Rosa; Jianfang Liu, Columbia University, School of Nursing; Grant Martsof, University of Pittsburgh; Julius Chen, Columbia University Irving Medical Center; Lusine Poghosyan, Columbia University, School of Nursing
- 4:24 PM**      **Nurse Practitioner Workforce Outcomes and Independent Management of Patient Panels**  
Do Kyung Kim, University of Pittsburgh, School of Nursing; Hayley Germack, University of Pittsburgh, School of Nursing; Jordan Harrison, RAND Corporation; Grant Martsof, University of Pittsburgh; Lusine Poghosyan, Columbia University, School of Nursing
- 4:42 PM**      **Comparing Patient Outcomes Among DNP- and MSN-Prepared Primary Care Nurse Practitioners**  
Grant Martsof, University of Pittsburgh; Zhongqi Yue, Columbia University, School of Nursing; Lusine Poghosyan, Columbia University, School of Nursing

## BS, MS, DNP, and Early PhD School Selected Posters and Emerging Clinical Research Scholar Posters

Ballroom D/E

### BS Posters

1. **Active Women's Incontinence Screening Tool (AWIST): A Comprehensive Tool to Assess Female Athletic Urinary Incontinence (UI)**  
Hailey Ann Stevens, University of New Hampshire, College of Health and Human Services
- 1A. **Websites and Apps may Improve Equity in Advance Care Planning (ACP)**  
Vicky Lin, University at Buffalo, School of Nursing; Kelly Tenzek; Suzanne Sullivan
2. **First Generation Female College Students' Health, Stress & Alcohol Use**  
Melissa Sosa, University of Rhode Island, College of Nursing
- 2A. **The Role of Race on Prenatal Care Experiences**  
Karen Aldana, Boston College, William F. Connell School of Nursing; Mary Simonelli
- 3A. **Gender Affirming Care and the Role of Pronouns: A Systematic Review**  
Maria Beer, The Pennsylvania State University, Ross and Carol Nese College of Nursing; Britney Wardecker, The Pennsylvania State University, Ross and Carol Nese College of Nursing
4. **Key Components of the U.S. State Nurse Practice Acts**  
Narjis Moosavi, Rutgers, The State University of New Jersey, School of Nursing
- 4A. **Your Health Matters: Improving the Health of Vulnerable Children**  
Tracy Perron, The College of New Jersey; Demi Hernandez, The College of New Jersey; Maria Torraca, The College of New Jersey; Chase Eisenberg, The College of New Jersey; Christopher Worthington, The College of New Jersey; Tami Jakubowski, The College of New Jersey
5. **Exploring How People With Schizophrenia Believe They are Perceived by Healthcare Workers and How Those Perceptions Affect Healthcare Seeking Behavior**  
Stella Otis, University of Vermont
- 5A. **Exploring Work-Related Stressors and Coping Behaviors in Newly Graduated Registered Nurses**  
Mary Pomponio, Monmouth University, Marjorie K. Unterberg School of Nursing and Health Studies; Patricia Sciscione, Monmouth University, Marjorie K. Unterberg School of Nursing and Health Studies
6. **Factors and Perceptions of Eating Habits by Emergency Department Nurses**  
Emily Holland, Villanova University, M. Louise Fitzpatrick College of Nursing
- 6A. **Descriptive Analysis of Patient-Controlled Analgesia with Intravenous Hydromorphone for Lower Extremity Fracture Pain During Hospitalization**  
Heather O'Connor, University of Delaware, School of Nursing; Mari Griffioen, University of Delaware, School of Nursing
7. **Impact of a 6-week Intervention on Social Isolation & Loneliness in Older Adults**  
Nicholas R. Nicholson Jr., Quinnipiac University; Caitlin Hanrahan, Quinnipiac University; Richard Feinn
- 7A. **Impact of Pain on Neurobehavioral Outcomes in Male vs. Female Preterm Infants**  
Kelsey Marcaurele, University of Connecticut, School of Nursing
8. **Influence of Individual Characteristics on Perceived Risk of Alzheimer's Disease Among African Americans**  
Rebekah Cheng, University of Pennsylvania, School of Nursing; Yan Wang, University of Pennsylvania, School of Nursing; Yue Dong, University of Pennsylvania, School of Nursing; Jeong Eun Kim, University of Pennsylvania, School of Nursing; Dianxu Ren, University of Pennsylvania, School of Nursing; Lisa Tamres, University of Pennsylvania, School of Nursing; Jennifer Lingler, University of Pennsylvania, School of Nursing

### MS Posters

- 8A. **Patient-Centered Advance Care Planning Intervention Across the Aging Continuum: A Review of the Literature Relating to Respecting Choices®**  
Olivia Rubio, The Pennsylvania State University, Ross and Carol Nese College of Nursing; Amasa Gillingham, The Pennsylvania State University, Ross and Carol Nese College of Nursing; Diane Berish, Judith Hupcey, The Pennsylvania State University, Lisa Kitko, The Pennsylvania State University, Ross and Carol Nese College of Nursing

**9. The Effects of L-theanine on Anxiety Symptoms**

Alaina Howell, St. John Fisher College, Wegmans School of Nursing

**9A. Enhanced Patient and Caregiver Education and its Effect on Preparedness for Discharge and Readmission Rates**

Alexis Humberson, University of Pennsylvania, School of Nursing

**10. Success Strategies for ESL Nursing Students**

Jenny Wong, University of Massachusetts, Amherst Elaine Marieb College of Nursing

**10A. Evaluating the Use of an Escape Room to Reinforce APA Style**

Kelly A. Kuhns, Millersville University; Justin McFail, Millersville University

**11. Structured Type 2 Diabetes Education to Improve Self-Monitoring Blood Glucose, Self-Care Management, and Diabetes Knowledge in a Multicultural Family Practice Clinic**

DeeDee Foster, George Washington University

**DNP Posters**

**11A. ICU Diaries: A Pilot Program**

Abbygale Hackenberger, The Pennsylvania State University, Ross and Carol Nese College of Nursing

**12. Implementing an Overdose Education and Naloxone Distribution Intervention to Reduce Opioid Overdose in Rural CT**

Erica Anna Lyons, MGH Institute of Health Professions

**12A. The Impact of Obesity Bias Education on Junior, Senior, and Accelerated "FACT" Nursing Students' Perception of Obesity**

Marguerite Dunham, Thomas Jefferson, College of Nursing

**13. Effectiveness of Telehealth Cognitive Testing for Staging Alzheimer's Disease**

Mary Val Palumbo, University of Vermont; Victoria Greenough, University of Vermont; Betty Rambur

**14. Late Life Depression Education: Impact on Acute Care Nurses' Knowledge, Attitude, and Screening Practices**

Kate Barba, University of Massachusetts

**14A. Creating a Welcoming, Inclusive, and Affirming Primary Care Environment for Lesbian, Gay, Bisexual, Transgender, Queer, Questioning, Intersex and Asexual Patients**

Samantha Korbey, Yale, School of Nursing; Joanne Iennaco; Joan Kearney, Yale University; La Ron Nelson

**15. EBP Protocol: Acute Osteoporotic Vertebral Compression Fracture Management**

Tao Fen Cheng, Hunter Bellevue, School of Nursing

**15A. Integrating Behavioral Health Service in Rural and Underserved Primary Care**

Maree Grande, University at Buffalo, The State University of New York, School of Nursing; Christopher Barrick, University at Buffalo, School of Nursing; Nicole Roma; Sabrina Casucci, University at Buffalo, School of Nursing; Colleen Canfield-Smith, University at Buffalo, School of Nursing; Yu-Ping Chang, University at Buffalo, The State University of New York School of Nursing

**16. Utilization of a Sensory Modulation Room in Adults with Autism Spectrum Disorders to Reduce Manual Restraints, Locked Seclusions, and PRN Medication Administration for Agitation**

Megan Chubb, University of Pennsylvania, School of Nursing

**16A. Quality Improvement Project Utilizing a Comprehensive Toolkit with Individualized Food Label Education and Brief Action Planning for Healthy Food Choices to Reduce the Burden of Chronic Disease Among Black People in the United States**

Johanna Kasidi, University of Massachusetts, Amherst Institute for Applied Life Sciences and College of Nursing

**17. Helping Our Patients' Emotional Stability (HOPES) - Improving Access to Mental Health Care for Adolescents Using an Integrated Behavioral Health Model**

Marisa Massaro, Stony Brook University, School of Nursing; Paula Timoney

**17A. The Effect of an Education Program on Beliefs About Bariatric Patients in Registered Nurses**

Heather Ann Veltre, Monmouth University, Marjorie K. Unterberg School of Nursing and Health Studies; Cira Fraser, Monmouth University, Marjorie K. Unterberg School of Nursing and Health Studies

**18A. The Effect of an Education Program on Diabetes Self-Efficacy in Low Health Literacy Patient**

Jenny Bernard, Monmouth University, Marjorie K. Unterberg School of Nursing and Health Studies

- 19. Companionship Wellness Program: Reducing Feelings of Loneliness Among Older Patients Admitted to UMass Memorial Medical Center**  
Jeffrey Chhim, University of Massachusetts, Medical School Graduate School of Nursing; Alice Kennedy, University of Massachusetts; Adarsha Bajracharya, University of Massachusetts; Jean Boucher, University of Massachusetts, Medical School Graduate School of Nursing
- 19A. Mindfulness Interventions for Increasing Breastfeeding Self-Efficacy**  
Serena Rosa, MGH Institute of Health Professions; Margie Sipe, MGH Institute of Health Professions
- 20. Reducing Suicidal Behavior among Psychiatric Patients in the Community: Implementation of the NP-Led Safety Planning Bundle**  
Jazmin Caceres, Hunter Bellevue, School of Nursing
- 20A. Eliminating Race-Based Medicine in Primary Care**  
Corrine Y. Jurgens, Boston College, William F. Connell School of Nursing; Joelle Mamon, Boston College, William F. Connell School of Nursing; Ellen Tracy, Boston College, William F. Connell School of Nursing
- 21. Screening for PTSD in veterans in Primary Care: An Integrative Review**  
Kristy Marie Chester, The University of Delaware, School of Nursing
- 21A. Implicit Bias Training in Student Registered Nurse Anesthetists**  
Iteona Roundtree, Thomas Jefferson, College of Nursing; Jodi-Ann Smith, Thomas Jefferson, College of Nursing
- 22. Designing, Implementing and Evaluating an Interprofessional Survivorship Model of Care in an Academic Cancer Center**  
Sarah Loschiavo, University of Connecticut, School of Nursing; Joy Elwell; Lisa Holle, University of Connecticut, School of Pharmacy; Susan Tannenbaum, University of Connecticut
- 22A. Examining Nurses Knowledge and Competence on The Emergency Severity Index (ESI) Triage Algorithm**  
Taryn Lee Andrews, University of Massachusetts, Dartmouth College of Nursing and Health Sciences
- 23. Beyond the Diagnosis: Implementing Distress Screening in a Cancer Center**  
Akilah Bryant, New York University, Rory Meyers College of Nursing
- 23A. Optimizing Mental Health Care by Increasing Access Services through Evidenced-based mHealth Applications.**  
Barbara Laganieri, University of New Hampshire, College of Health and Human Services; Pamela Kallmerten, University of New Hampshire
- 24. Anesthesia for Patients Who Use Marijuana**  
Bohdan Khromenko, Cedar Crest College, School of Nursing
- 24A. Implementation of a Patient-Reported Outcomes Measure for Patients With Advanced Heart Failure**  
Leanne Burke, Rhode Island College, School of Nursing
- 25. Dietary Self-Monitoring for Weight Loss in Adults with Obesity**  
Kelly A. Kuhns, Millersville University; Heather Shuker, Millersville University; Teresa Hartmann, Millersville University

#### Early PhD Posters

- 25A. Integration of Mental Health Services into Primary Care in the United States: Facilitators and Barriers**  
Yifat Peer, University of Massachusetts
- 26. Understanding the Experience of the Nurse as an Informal Caregiver: Development of a Theoretical Model**  
Jean Marie Gouveia, University of Massachusetts, Dartmouth College of Nursing and Health Sciences; Susan M Hunter Revell, University of Massachusetts Dartmouth
- 26A. Barriers and Facilitators of Pain Management in Persons with Dementia: A Systematic Review**  
Yo-Jen Liao, The Pennsylvania State University, Ross and Carol Nese College of Nursing; Ying-Ling Jao, The Pennsylvania State University; Lisa Kitko, The Pennsylvania State University, Ross and Carol Nese College of Nursing; Diane Berish; Angelina Hin, Pennsylvania State University, College of Health and Human Development; Marie Boltz, The Pennsylvania State University, Ross and Carol Nese College of Nursing
- 27. Resilience Narratives Amid Economic and Educational Inequalities Storied by Unemployed Young American Black Men**  
Kisha N. Thompson, Pace University, Leinhard School of Nursing; Keville Frederickson, Pace University
- 27A. Non-pharmacologic Interventions to Improve Depression and Anxiety among Pregnant and Parenting Women Who Use Substances: An Integrative Literature Review**  
Caroline Darlington, University of Pennsylvania, School of Nursing; Peggy Compton; Anne Teitelman; Karen Alexander, Friends Research Institute



28. **King's Theory of Goal Attainment in Community Research with Older Adults: A Conceptual Framework**  
Arta Dalipi Shabani, University of Maribor; Margaret Denny, University of Maribor, Faculty of Health Sciences; Suzanne Denieffe, WellSpan Health
- 28A. **Co-Design Methods in Women's Reproductive Health Services Research: An Integrative Review**  
Lauren Gerchow, New York University, Rory Meyers College of Nursing; Chenjuan Ma, New York University; Maya Clark-Cutaia, New York University, Rory Meyers College of Nursing; Allison Squires, Rory Meyers College of Nursing, New York University
29. **Exploratory Analysis of the Influence of Individual Characteristics on Trust in Clinical Researchers within African American Community**  
Yan Wang, University of Pennsylvania, School of Nursing; Jeong Eun Kim, University of Pennsylvania, School of Nursing; Yue Dong, University of Pennsylvania, School of Nursing; Rebekah Cheng, University of Pennsylvania, School of Nursing; Lisa Tamres, University of Pennsylvania, School of Nursing; Dianxu Ren, University of Pennsylvania, School of Nursing; Jennifer Lingler, University of Pennsylvania, School of Nursing
- 29A. **A Scoping Review of "Invisible Illness": How Individuals With Hidden Chronic Conditions Become Transparent and Integrate Their Identities**  
Tracy Trimboli, Stony Brook University, School of Nursing
30. **Sleep Disturbances and Associated Factors Among Breast Cancer Survivors: From baseline to 1-Year follow up**  
Nouf Alanazi, University at Buffalo, The State University of New York, School of Nursing; Fangyi Gu, Roswell Park Comprehensive Cancer Center; Chi-Chen Hong, Roswell Park Comprehensive Cancer Center; Rebecca Lorenz, University at Buffalo, The State University of New York School of Nursing
31. **Knowing the Patient as a Person: Embracing Diversity and Inclusion through Precision Nursing**  
Janusz Kaleta Jr., CUNY Graduate Center & CUNY SPS (School of Professional Studies)
- 31A. **An Ecological Exploration of Institutional Racism as a Fundamental Cause of Racially Disparate Birth Outcomes in New Jersey**  
Sakura Ando, Rutgers, The State University of New Jersey, School of Nursing
32. **Weight-Neutral Care: A Concept Analysis**  
Samantha Turner, University of Massachusetts, Medical School Graduate School of Nursing
- 32A. **An Explanatory-Sequential Mixed Methods Study Examining the Experiences of Emerging Adults Who Have 'Aged Out' of Foster Care in Canada**  
Brianna Jackson, Yale, School of Nursing
33. **Health Behaviors of Adolescents in Immigrant Families: An Integrative Review**  
Jennifer Dean Durning, Villanova University, M. Louise Fitzpatrick College of Nursing; Elizabeth Dowdell, Villanova University; Helene Moriarty, Villanova University M. Louise Fitzpatrick College of Nursing; Corporal Michael J. Crescenzo VA Medical Center, Philadelphia
- 33A. **Door-to-Diuretics Decompensated Heart Failure Patients**  
Sunita Pokhrel Pokhrel Bhattarai, University of Rochester, School of Nursing; Dillon Dzikowicz, University of Rochester, School of Nursing; Mary Carey; Arthur Zemanek, University of Rochester, School of Nursing
- 34A. **The Effect of Flexible Consumer Behaviors on Diabetes Control Among Older Adults in the US**  
Semiha Asli Bozkurt, University of Massachusetts Boston; Suzanne Leveille, University of Massachusetts Boston
35. **Mental Health Disorders among Middle Eastern Immigrant Women Living in the U.S.: A Scoping Review**  
Wjdan Amer Almutairi, University of Massachusetts, Amherst Institute for Applied Life Sciences and College of Nursing
36. **Mitochondrial Function in Neurodevelopmental Outcomes Following Early Life Stress: A systematic review**  
Tingting Zhao, University of Connecticut, School of Nursing; Nathan Alder, University of Connecticut, Department of Molecular and Cell Biology; Angela Starkweather, University of Connecticut; Ming-Hui Chen; Adam Matson, University of Connecticut, School of Medicine; Wanli Xu, University of Connecticut; Jeremy Balsbaugh, University of Connecticut, Center for Open Research Resources & Equipment; Xiaomei Cong, University of Connecticut
- 36A. **Social Support, Sleep Problems, and Depressive Symptoms: Mediation Analysis and Gender Differences**  
Aastha Dahal, The University of Delaware, School of Nursing; Xiaopeng Ji, University of Delaware
37. **Child Labor in United States Tobacco Farming Health Risks and Health Hazards: Impact of Labor Policies**  
Lisa Iannacci-Manasia, Molloy College, Barbara H. Hagan School of Nursing and Health Sciences
- 37A. **Using a Mentorship Approach to Address the Underrepresentation of Ethnic Minorities in Senior Nursing Leadership**  
Dewi Brown-DeVeaux, New York University Langone Health *Emerging Clinical Nurse Researcher/Scholar*

## PhD Posters

- 38. A Systematic Review and Meta-Analytic Evaluation of Psychosocial Interventions in Parents of Children with Cancer with an Exploratory Focus on Minority Outcomes**  
Ijeoma Julie Eche, Dana Farber Cancer Institute; Miryam Yusuf, Dana Farber Cancer Institute; Docia Isibor, Dana Farber Cancer Institute; Joanne Wolfe, Dana Farber Cancer Institute *Emerging Clinical Nurse Researcher/Scholar*

## Post-Doctoral Fellow Posters

- 38A. Exploring Stress and Trauma in Primary Care with Low-Income Aging Women: A Secondary Qualitative Analysis**  
Kirsten A Dickens, Massachusetts General Hospital; Ann Malley, Massachusetts General Hospital; Stephen Bartels; Travis Baggett; Sara Looby *Emerging Clinical Nurse Researcher/Scholar*

## FRIDAY, APRIL 1, 2022

### Paper Session C1: Social Determinants of Health

Meeting Room 555

- 9:30 AM** **Factors Associated with Medication Decision Making in Low-Income African American Families of Children with ADHD: A Mixed Methods Study**  
Amy Glasofer, University of Nevada Las Vegas; Catherine Dingley, University of Nevada Las Vegas; Jinyoung Kim
- 9:48 AM** **Nurse Practitioner Students in Academic-Clinical Partnerships Are Better Prepared to Identify Social Determinants of Health in Vulnerable Populations**  
Suzy Barcelos Winchester, University of Rhode Island, College of Nursing; Denise Coppa, University of Rhode Island, College of Nursing
- 10:06 AM** **Moments of Intersection: A Strategy to Promote Community-Engaged, Multidisciplinary Problem-Solving Skills for Students**  
Pamela C. Spigelmyer, Duquesne University, School of Nursing; Andrew Simpson, Duquesne University; Cathleen Appelt, Duquesne University; Jessica Devido, Duquesne University, School of Nursing
- 10:24 AM** **The Role of Clinical Research Nurses in Minority Recruitment to Cancer Clinical Trials**  
Kristen Legor, University of Massachusetts, Boston College of Nursing and Health Sciences; Laura Hayman; Janice Foust; Meghan Blazey
- 10:42 AM** **Perceived Food Environment and Addictive-like Eating Behaviors in Adults with Obesity**  
Ariana Chao, University of Pennsylvania, School of Nursing; Courtney Sexton, University of Pennsylvania, School of Nursing; Yingjie Zhou, University of Pennsylvania, School of Nursing; Randy Bach, University of Pennsylvania, School of Nursing

### Paper Session C2: Quality & Safety

Meeting Room 552A

- 9:30 AM** **Impact of Registered Nurses' Spiritual Well-Being, Spiritual Care Perspectives, and Their Inclusion of Spiritual Care for Patients in Acute Care Settings**  
Barbara Kitchener, Seton Hall University, College of Nursing
- 9:48 AM** **Better Nurse Practitioner Practice Environments Reduce Racial Disparities in Coronary Artery Disease Management**  
Heather Brom, Villanova University, M. Louise Fitzpatrick College of Nursing; Jacqueline Nikpour, University of Pennsylvania, School of Nursing; Lusine Poghosyan, Columbia University, School of Nursing; J Margo Brooks Carthon
- 10:06 AM** **The Relationship Between Pre COVID-19 Nursing Home Infection Prevention and Control Policies and COVID-19 Deaths**  
Chloe Kang, Columbia University, School of Nursing; Patricia Stone; Andrew Dick, RAND Corporation
- 10:24 AM** **Reducing Rebound Pain in Orthopedic Surgery: A Quality Improvement Project.**  
Inna Zinger, MGH Institute of Health Professions; Mary Kate Hegarty, Brigham and Women's Hospital; Jose Zeballos, Brigham and Women's Hospital; Alex Hoyt
- 10:42 AM** **Ubiety in Nursing Practice – Making each Patient the Star of that Minute amid Distractions. A Qualitative Description.**  
Rita Amoah, University of Massachusetts, Medical School Graduate School of Nursing; Susan Sullivan-Bolyai, University of Massachusetts, Medical School Graduate School of Nursing; Jessica Pagano-Therrien, University of Massachusetts, Medical School Graduate School of Nursing



### Paper Session C3: Health Promotion Behaviors and Disease Prevention

Meeting Room 552B

- 9:30 AM**      **A Virtual Breast Cancer Prevention Education Program among Korean Immigrant Women during the COVID-19 Pandemic**  
Jin Young Seo, Hunter College; So-Hyun Park; Sung Eun Choi; Shiela Strauss
- 9:48 AM**      **A Qualitative Study Risk Assessment and Self-Initiated STI Testing Among College Students Engaged in Online Dating**  
Oluwamuyiwa Adebayo, The Pennsylvania State University, Ross and Carol Nese College of Nursing; Brianna Lockwood, The Pennsylvania State University, Ross and Carol Nese College of Nursing
- 10:06 AM**      **Self-Care among Black African Immigrants with Hypertension**  
Sandra Toffay, University of Massachusetts, Medical School Graduate School of Nursing
- 10:24 AM**      **Factors Affecting the Utilization of Postnatal Care Services in First Seven Days of Childbirth at Public Health Facilities in Nepal**  
Sangita Pudasainee-Kapri, Rutgers, The State University of New Jersey, School of Nursing; Ambika Pandey, Public Health Office Makawanpur, Nepal
- 10:42 AM**      **Nurse Practitioner Experiences with Providing Nutrition Counseling to Adult Patients in Primary Care Practice**  
Maggie Eaton, Northeastern University; Lisa Duffy; Rachel Pozzar; Rhonda Board

### Paper Session C4: Mental Health, HCP

Meeting Room 553

- 9:48 AM**      **The Mediating Role of Perceived Stress in the Relationship of Compassion Fatigue and Work Engagement in ICU Nurses During the COVID-19 Pandemic**  
Zequan Wang, University of Connecticut, School of Nursing; Chen Li, Jinan University
- 10:06 AM**      **Nurses with Mental Illness: Wounded Healers or Impaired Professionals?**  
Krystyna de Jacq, Pace University
- 10:24 AM**      **Use of Service Dogs in Veterans With Post Traumatic Stress Disorder or Traumatic Brain Injury**  
Jennifer Shiroff, Thomas Jefferson, College of Nursing; Jacqueline Fulford, Thomas Jefferson, College of Nursing
- 10:42 AM**      **A Correlational Study of the Relationships of Emergency Department (ED) Nurses' Perceptions of Stigma, Attribution, Caring and Individualized Care with Respect to the Treatment of Persons with Mental Illness**  
Jennifer McIntosh, Yale, School of Nursing

### Paper Session C5: Nursing Education

Meeting Room 551

- 9:30 AM**      **The Use of Simulation for Clinical Nursing Faculty Orientation: A Multi-Site Study**  
Jennifer Gunberg Ross, Villanova University, M. Louise Fitzpatrick College of Nursing; Kimberly Dunker, Pacific Union College; Melissa Duprey, University of Massachusetts, Dartmouth College of Nursing and Health Sciences; Tracy Parson, Lorain County Community College; Dot Bartell, Texas Christian University; Linda Humphries, Texas Christian University
- 9:48 AM**      **Student Resilience in Nursing Education: A Theory Synthesis**  
Gerri-lyn Boyden, University of Massachusetts, Dartmouth College of Nursing and Health Sciences
- 10:06 AM**      **Predictors of the Teaching Self-Efficacy of Academic Nurse Educators**  
Teresa Puckhaber, Western Connecticut State University
- 10:42 AM**      **Facilitators and Inhibitors of LPN-to-RN Student Transition: A Cross-Sectional National Survey**  
Amanda Cornine, Worcester State University

## **Symposium Session C6: Qualitative RIG Symposium: Nurse Scientists Thinking Outside the Box to Address Diversity and Qualitative Data Collection informed by a Pandemic**

**Meeting Room 556**

- 9:30 AM**      **Challenges Using Virtual Interviews to Understand Experiences of Persons with Opioid Use Disorder Receiving Integrated Care for Hepatitis C Virus Infection via Telemedicine in Opioid Treatment Programs**  
Suzanne Dickerson, University at Buffalo, The State University of New York School of Nursing; Urmo Jaanimagi, University at Buffalo Jacobs School of Medicine and Biomedical Sciences; Andrew Talal, University at Buffalo, Jacobs School of Medicine and Biomedical Sciences
- 9:48 AM**      **Methods Flexibility and Adaptation During a Pandemic: The Lived-Experience of Patient Adoption and Adaptation to Closed-Loop Insulin Pump Systems**  
Chrystina Manero, University of Massachusetts, Medical School Graduate School of Nursing
- 10:06 AM**      **Recruitment and Methods for Qualitative Research with Diverse Older Adults During the COVID-19 Pandemic: An example from the Outdoors Study**  
Justine Suzette Sefcik, Drexel University, College of Nursing and Health Professions; Amita Panicker, Drexel University, College of Nursing and Health Professions; Danielle Katsev, Drexel University, College of Nursing and Health Professions; Annalisa Na, Duquesne University, School of Nursing; Sherry Greenberg, Seton Hall University, College of Nursing; Rose Ann DiMaria-Ghalili, Drexel University, College of Nursing and Health Professions
- 10:24 AM**      **Uncharted Territory: Symptoms to Diagnosis for Parents of Children with Cerebral Palsy**  
Nancy J. Wise, Eastern Mennonite University
- 10:42 AM**      **Adapting Data Collection: Barriers to the implementation of Evidence-Based-Practice (EBP) in clinical for low-income setting in Palestine**  
Intima Alrimawi, School of Nursing and Health Professions

## **Poster Session 3: Meet the Researchers**

**Ballroom D/E**

- 1. Characteristics of an ECG in the Prone Position**  
Mary G. Carey
- 2. What Factors Influence Asian American College Students Mental Health Seeking Behaviors**  
Teri Aronowitz, University of Massachusetts, Medical School Graduate School of Nursing; Nina Nguyen, University of Massachusetts, Boston College of Nursing and Health Sciences; BoRam Kim
- 3. Barriers, Confidence, Interest and Roles in Research for Heart Failure Nurses**  
Kristen A. Sethares, University of Massachusetts, Dartmouth College of Nursing and Health Sciences; Cheryl Westlake, Memorial Care Health System
- 4. Lessons from a Community Outreach Exercise Program for Seniors**  
Kyeongra Yang, Rutgers, The State University of New Jersey, School of Nursing
- 5. Nurses' Contributions to Collaborative Problem Solving, Entrepreneurship and Innovation at MIT Hackathons During the COVID-19 Pandemic**  
Olga Kagan, Molloy College, Barbara H. Hagan School of Nursing and Health Sciences; Kelly Ayala, Froedtert Hospital Menominee Falls; Hiyam Nadel, Massachusetts General Hospital; Joshual LittleJohn, IntelyCare, Inc.; Rebecca Koszalinski, University of Oklahoma, Health Sciences Center
- 6. A Diabetes Self-management Mobile Phone Application for Portuguese People with Diabetes: Design and Development**  
Peeranuch LeSeure, University of Massachusetts, Dartmouth College of Nursing and Health Sciences; Elizabeth Chin; Mary Elizabeth Sosa, University of Massachusetts, Dartmouth College of Nursing and Health Sciences; Shelley Zhang, University of Massachusetts, Dartmouth Computer and Information Science
- 7. Increasing HGBA1c Point-of-Care Testing in a Federally Qualified Health Center Setting**  
Patricia Dempsey, Monmouth University, Marjorie K. Unterberg School of Nursing and Health Studies
- 8. Neighborhood Characteristics and Sleep Health among Adults in the Health and Retirement Study**  
Rebecca A. Lorenz, University at Buffalo, The State University of New York School of Nursing; Samantha Auerbach; Chin-Shang Li, University at Buffalo, The State University of New York School of Nursing; Yu-Ping Chang, University at Buffalo, The State University of New York School of Nursing

**9. Peer Mentoring of Diverse PhD Nursing Students to Promote Success**

Keville Frederickson, Pace University; Christine Corcoran

**10. Preferences of Mobile Health App Features for Self-care Among Older Adult Heart Failure Veterans**

Marva Foster, Veterans Affairs Boston Healthcare System; Stephan Gaehde, Veterans Affairs Boston Healthcare System

**11. Resilience in Women Who Experience Intimate Partner Violence: An Integrative Review**

Karen Roush, Pace University, Leinhard School of Nursing

**12. The Influence of Stress Management Interventions on Cardiovascular Disease Prevention During Aromatase Inhibitor Therapy for Breast Cancer**

John Merriman, New York University, Rory Meyers College of Nursing; Ashley Washington, Baylor University

**Paper Session D1: Organizational and Workforce Issues****Meeting Room 556****12:00 PM Stories from Nurses on the Front Lines of the COVID-19 Pandemic**

Michael Evans, The Pennsylvania State University, Ross and Carol Nese College of Nursing; Kiernan Riley, The Pennsylvania State University, Ross and Carol Nese College of Nursing; Kalei Kowalchik, The Pennsylvania State University, Ross and Carol Nese College of Nursing; Logan Desanto, The Pennsylvania State University, Ross and Carol Nese College of Nursing; Bill Doan, The Pennsylvania State University, Ross and Carol Nese College of Nursing

**12:18 PM Experiences of Parents as Healthcare Workers During COVID-19 Pandemic**

Michelle M. Kelly, Villanova University, M. Louise Fitzpatrick College of Nursing; Linda Copel; Amy McKeever; Michelle McKay, Villanova University, M. Louise Fitzpatrick College of Nursing; Janette Herbers, Villanova University; Abigail Knight, Villanova University; Isabel Mahan, Villanova University, M. Louise Fitzpatrick College of Nursing; Christine Pariseault

**12:36 PM Experiences of Healthcare Workers During COVID-19 Pandemic**

Suzanne Smeltzer, Villanova University, M. Louise Fitzpatrick College of Nursing; Linda Copel; Patricia K. Bradley, Villanova University, M. Louise Fitzpatrick College of Nursing; Linda Maldonado; Christine D'Annunzio, Villanova University, M. Louise Fitzpatrick College of Nursing; Jennifer Durning, Villanova University, M. Louise Fitzpatrick College of Nursing; Heather Brom, Villanova University, M. Louise Fitzpatrick College of Nursing; Donna S. Havens, Villanova University, M. Louise Fitzpatrick College of Nursing; Janell Mensinger; Jennifer Yost; Ann McKenzie, Villanova University, M. Louise Fitzpatrick College of Nursing; Peter Kaufmann

**12:54 PM An Inquiry into the Lived Experience of Tele-ICU Nurses' Practice**

Annie George, Adelphi University College of Nursing and Public Health

**1:12 PM Working the Frontline in Acute Care during COVID-19: Staffing, PPE Adequacy, Burnout and Intent to Leave**

Pamela B. de Cordova, Rutgers, The State University of New Jersey, School of Nursing; Monika Pogorzelska-Maziarz; Irina Grafova; Suzanne Crincoli; Joseph Prado; Mary Johansen

**Paper Session D2: Nursing Education****Meeting Room 555****12:00 PM Developing Cultural Humility in Nursing Students**

Jessica Varghese, New York Institute of Technology; Mercy Joseph, New York Institute of Technology

**12:18 PM The Effects of an Evidence-Based Oncology Symptom Management Standardized Patient Simulation on Prelicensure Nursing Student Outcomes in a Seminar-Style Course**

Sherry A. Burrell, Villanova University, M. Louise Fitzpatrick College of Nursing; Jennifer Ross, Villanova University, M. Louise Fitzpatrick College of Nursing; MaryAnn Heverly, Villanova University, M. Louise Fitzpatrick College of Nursing; Christine D'Annunzio

**12:36 PM The Effects of Multiple-Patient Simulation on Baccalaureate Nursing Students' Anxiety and Self Confidence: A Pilot Study**

Jennifer Gunberg Ross, Villanova University, M. Louise Fitzpatrick College of Nursing; Eleanor Latz; Colleen Meakim; Gail Furman, Villanova University, M. Louise Fitzpatrick College of Nursing; Angelina Arcamone; Kathryn Reynolds, Villanova University, M. Louise Fitzpatrick College of Nursing

*D2 continues on next page*

- 12:54 PM**      **A Study of Nursing Student Perceptions of Online Educational Programs During COVID-19**  
Mirinda Tyo, University of Massachusetts, Dartmouth College of Nursing and Health Sciences; Monika Schuler; Karen Barnett, University of Massachusetts, Dartmouth College of Nursing and Health Sciences
- 1:12 PM**      **Nursing Students' Academic and Work/Volunteer Experiences During the COVID-19 Pandemic**  
Carol Della Ratta, Stony Brook University, School of Nursing; Barbara Brathwaite, Stony Brook University, School of Nursing; Kathleen M Gambino, Stony Brook University, School of Nursing; Annemarie Rosciano, Stony Brook University, School of Nursing

**Paper Session D3: Organizational and Workforce Issues**

**Meeting Room 552A**

- 12:00 PM**      **The Association of Sleep and Burnout: A Quantitative Analysis of Stress Mitigation in Clinical Workforce**  
Allison Norful, Columbia University, School of Nursing
- 12:18 PM**      **A Qualitative Exploration of Resilience in Direct Support Professionals who Care for Adults with Intellectual and Developmental Disabilities: Towards Improved Access to a Critical Resource for Health**  
Melissa Desroches, University of Massachusetts, Dartmouth College of Nursing and Health Sciences; Mirinda Tyo, University of Massachusetts, Dartmouth College of Nursing and Health Sciences
- 12:36 PM**      **Leading from Dusk to Dawn: Emotional Intelligence and Leadership Style of Administrative Supervisors**  
Susan Heidenwolf Weaver, Rutgers, the State University of New Jersey and Hackensack Meridian Health; Mani Paliwal, Hackensack Meridian Health
- 12:54 PM**      **Professional Values and Perception of Workplace Environment Among Nurses and Nursing Assistants**  
Patricia A. Eckardt, Good Samaritan Hospital; Rosemary Haas, Good Samaritan Hospital; Patricia Berdon, Good Samaritan Hospital; Geraldine O'Callaghan, Good Samaritan Hospital; Susan Tromp, Good Samaritan Hospital; Elizabeth Cotter, Molloy College, Barbara H. Hagan School of Nursing and Health Sciences; Donna Driscoll, Molloy College, Barbara H. Hagan School of Nursing and Health Sciences
- 1:12 PM**      **Successfully Increasing the Diversity of the Nursing Workforce in Rural South Carolina**  
Ruth Wittmann-Price, Thomas Jefferson, College of Nursing; Karen Gittings, Francis Marion University

**Paper Session D4: Organizational and Workforce Issues**

**Meeting Room 552B**

- 12:00 PM**      **Patient Demographics and Clinical Characteristics Influence Opioid and Non-Opioid Pain Management Prescriptions Across Provider Groups**  
Jacqueline Nikpour, University of Pennsylvania, School of Nursing
- 12:18 PM**      **Licensed Practical Nurse Workforce in New Jersey**  
Susan Heidenwolf Weaver, Rutgers, the State University of New Jersey and Hackensack Meridian Health; Pamela de Cordova, Rutgers, The State University of New Jersey, School of Nursing; Edna Cadmus
- 12:36 PM**      **Aggregating Individual-Level Data into Organizational-Level: Multi-Level Reliability and Interrater Agreement of a Nurse Practitioner Work Environment Questionnaire**  
Jianfang Liu, Columbia University, School of Nursing; Grant Martsolf, University of Pittsburgh; Supakorn Kueakomoldej, Columbia University, School of Nursing; Yihong Zhao, Columbia University, School of Nursing; Amelia Schlak, Columbia University, School of Nursing; Lusine Poghosyan, Columbia University, School of Nursing
- 12:54 PM**      **Evaluation of the Psychometric Properties of Power Influencing Professional Practice Change Scale (PIPPCS)**  
Dorothy A. Jones, Boston College, William F. Connell School of Nursing; Marianne Ditomassi
- 1:12 PM**      **A Confirmatory Factor Analysis of the Novice Nurse Practitioner Role Transition Scale**  
Hilary Barnes, Widener University, School of Nursing; Asefeh Faraz Covelli, The George Washington University, School of Nursing; Jonathan Rubright, National Board of Medical Examiners

## Paper Session D5: Childbearing and Women's Health

Meeting Room 553

- 12:00 PM**      **Experiences of Posttraumatic Growth in Widows**  
Elizabeth Scannell, Rutgers, The State University of New Jersey, School of Nursing; Mary Ellen Doherty, Western Connecticut State University
- 12:18 PM**      **Loss of a Child: Posttraumatic Growth in Mothers**  
Mary Ellen Doherty, Western Connecticut State University; Elizabeth Scannell, Rutgers, The State University of New Jersey, School of Nursing
- 12:36 PM**      **Peer Support Among Childbearing Women With Physical Disabilities**  
Serah Mwelu Nthenge, Siena College Nursing Program; Lauren Smith, Brandeis University, Lurie Institute of Disability Policy
- 12:54 PM**      **Sleep Health in Young Women with Breast Cancer**  
Youri Hwang, Yale School of Nursing; Samantha Conley, Yale, School of Nursing; Sangchoon Jeon; Nancy Redeker; Tara Sanft, Yale, School of Nursing; M. Tish Knobf
- 1:12 PM**      **Assessing Risk and Protective Factors and Resilience Among Adult Sexual Assault Survivors**  
Patricia Lavin, New York University, Langone Health

## Symposium Session D6: Charting a Diverse Path toward Equity in Maternal Child Health by the Effect of the Social and Community Context

Meeting Room 551

- 12:00 PM**      **Stress, Trauma, and Protective Factors among Postpartum Mothers during the COVID-19 Pandemic**  
Eileen Condon
- 12:18 PM**      **Associations Between Painful Procedures, Telomere Length and Infant Neurodevelopment**  
Sharon Casavant, University of Connecticut, School of Nursing
- 12:36 PM**      **Antenatal Cannabis Use: A Feasibility Study**  
Ruth F. Lucas, University of Connecticut, School of Nursing
- 12:54 PM**      **Breastfeeding Promotion among African American Women in the United States: Inclusive Role of the Black Church**  
Adwoa Gyamfi, University of Connecticut, School of Nursing
- 1:12 PM**      **"They're Scared that Somebody's Gonna Judge Them." Females in Foster Care Preferences for Effective Sexual and Reproductive Health Communication**  
Christina Ross, University of Connecticut, School of Nursing

## Paper Session E1: Organizational and Workforce Issues

Meeting Room 551

- 1:45 PM**      **The Impact of the Implementation of Team Nursing Approach During COVID-19 Surge**  
Karen Fitzgerald, Good Samaritan Hospital; Patricia Eckardt, Good Samaritan Hospital
- 2:03 PM**      **Nurses' Perceptions of a Rehabilitation Specialty Hospital Conversion to COVID-19 Populations to Support a Pandemic Surge: A Qualitative Descriptive Study**  
Barbara Buchko, WellSpan Health; Helen Copenheaver, WellSpan Surgery and Rehabilitation Hospital; Cherie Adkins, York College of Pennsylvania
- 2:21 PM**      **The Effect of Temporary Full Practice Authority on Psychiatric Mental Health Nurse Practitioners During a COVID-19 Surge: A Mixed Methods Survey Analysis**  
Monica O'Reilly-Jacob, Boston College, William F. Connell School of Nursing; Victor Petreca; Jennifer Perloff

*E1 continues on next page*

- 2:39 PM**      **ANA Code of Ethics Relevance to Nurses during COVID-19 Pandemic**  
Mary Louise Kanaskie, Penn State, Health Milton S. Hershey Medical Center; Cheryl Dellasega, Penn State, Health Milton S. Hershey Medical Center
- 2:57 PM**      **Evaluating Nursing Perspectives of the U.S. Public Health Emergency Response to the COVID-19 pandemic: A National Qualitative Study**  
Allison Norful, Columbia University, School of Nursing

**Paper Session E2: Chronic Illness**

**Meeting Room 555**

- 1:45 PM**      **Identifying Early Phase Clinical Trial Participants at Risk for Poor Outcomes**  
Debra Lundquist, Massachusetts General Hospital; Rachel Jimenez; Megan Healy; Andrew Johnson; Sienna Durbin, Massachusetts General Hospital; Ginger Capasso; Casandra McIntyre; Barbara Cashavelly; Dejan Juric; Ryan Nipp
- 2:03 PM**      **Symptom Burden and Health-Related Quality of Life among Older Adults Living with HIV**  
Jungeun Lee, University of Rhode Island, College of Nursing; Emily Haynes, University of Rhode Island, College of Nursing
- 2:21 PM**      **An Analysis of Sleep Disturbance and Pain on Telomere Length and Quality of Life in Adults 50 Years or Older with HIV**  
Jennel Osborne, Long Island University Brooklyn; Zainab Osakwe, Adelphi University, College of Nursing and Public Health; Michelle Odum
- 2:39 PM**      **Development of a Assessment of Patient Comfort after Integrative Modalities**  
Angela Russo, Northern Westchester Hospital Northwell Health; Susan Balamaci, Northern Westchester Hospital Northwell Health; Elizabeth Berro, Pace University
- 2:57 PM**      **An Innovative In-home Intervention for Veterans with Traumatic Brain Injury and Their Family Members: Qualitative Findings**  
Helene Moriarty, Villanova University, M. Louise Fitzpatrick College of Nursing; Corporal Michael J. Crescenz VA Medical Center, Philadelphia; Laraine Winter; Gala True, Southeast Louisiana Veterans Health Care System

**Paper Session E3: LGBTQIA Health**

**Meeting Room 553**

- 1:45 PM**      **An Investigation of Internalized Transphobia and Physical Activity among Gender Minority Adults**  
Billy A. Caceres, Columbia University, School of Nursing; Shayna Feuer, Columbia University, Irving Medical Center; Walter Bockting, Columbia University, Irving Medical Center; Kasey Jackman; Joseph Belloir, Columbia University, School of Nursing
- 2:03 PM**      **Perceived Acceptance-Rejection from Family Members and Suicidality in Gender Minority Young Adults**  
Jordon Bosse, Northeastern University; Kimberly Dion, University of Massachusetts; Lisa Chiodo
- 2:21 PM**      **A Qualitative Exploration of Sexual Minority College Students Experiences with Clinician-Initiated Sexually Transmitted Infection Testing**  
Oluwamuyiwa Adebayo, The Pennsylvania State University, Ross and Carol Nese College of Nursing; Jessica Nguyen, The Pennsylvania State University, Ross and Carol Nese College of Nursing
- 2:39 PM**      **LGBTQ+ Patient Experiences & Root Cause Remediation Strategies**  
Julie McCulloh Nair, West Chester University of Pennsylvania; Alex Waad, ChristianaCare; Stacey Byam, ChristianaCare; Madeline Maher, ChristianaCare
- 2:57 PM**      **The Role of Providers Education on the Health of LGBT+ Individuals**  
Jacqueline Johnston, Adelphi University, College of Nursing and Public Health; MaryEllen LaSala, Hofstra University; Carol Lucas, Adelphi University, College of Nursing and Public Health; Donna Willenbrock, Hofstra University



## Paper Session E4: Mental Health, Patient

Meeting Room 552A

- 1:45 PM**      **Understanding How African American Elders Perceive and Experience the Opioid Crisis**  
Sharon Rainer, Thomas Jefferson, College of Nursing
- 2:03 PM**      **OBAT Nurses' Contribution to Helping Patients with Opioid Use Disorder Achieve Sobriety**  
Jean Bernhardt, Massachusetts General Hospital; Elizabeth Benoit
- 2:21 PM**      **"I'm Shocked Anyone Thinks This is Helpful": Lessons Learned in Ableism While Piloting a Tool to Measure Meltdowns and Shutdowns in Autistic Adults**  
Laura Foran Lewis, University of Vermont; Abigail Burfoot, University of Vermont; Megan Cleary, University of Vermont; Mia Layton, University of Vermont; Molly Page, University of Vermont
- 2:39 PM**      **Conventional or Alternative: Mental Health Service Utilization Among Asians in the United States**  
Aliya Kuerban, Molloy College; Barbara H. Hagan School of Nursing and Health Sciences; Jin Young Seo, Hunter College
- 2:57 PM**      **Trauma Informed Care as a Mediator in the Relationship Between Access to Health Care and Subjective Health Outcomes Among People Experiencing Homelessness**  
Kimberlee Flike, Veterans Affairs Bedford Healthcare System; Laura Hayman; Thomas Byrne, Boston University School of Social Work; Qian Song, University of Massachusetts, Boston College of Nursing and Health Sciences; Teri Aronowitz, University of Massachusetts, Medical School Graduate School of Nursing

## Symposium Session E5: Examining Strategies to Promote Health Equity for Persons with an Incarceration Experience

Meeting Room 552B

- 1:45 PM**      **Reentry Programs for People with Mental Illnesses Leaving US Jails: An Integrative Review**  
Anne Reeder, University of Connecticut, School of Nursing
- 2:03 PM**      **Facilitators and Barriers to Self-Managing Diabetes among Persons Recently Transitioned from Prison to Supervised Community Housing**  
Louise Reagan, University of Connecticut, School of Nursing
- 2:21 PM**      **A Hybrid Analysis of Forgiveness in the Correctional Setting**  
Donna Zucker, University of Massachusetts
- 2:39 PM**      **Keeping Research to Promote Health Equity for Diverse Populations Moving Forward During a Pandemic**  
Susan Loeb, The Pennsylvania State University, Ross and Carol Nese College of Nursing

THE CATHOLIC  
UNIVERSITY  
OF AMERICA



Conway School  
of Nursing

*congratulates*

**Nalini Jairath,**

PhD, MSN, RN

**Sandra O'Brien,**

PhD, CRNP-F, PHCNS-BC, RN

**Janice Agazio,**

PhD, CRNP, RN FAANP, FAAN

and colleague

**Bonnie Benetato,**

PhD, MSN, MBA, FNP-BC,

an alumna and adjunct faculty member

*on receiving the*

2022 Eastern Nursing Research Society/  
Nursing Research Authorship Award  
for their article entitled

“Just-in-Time Qualitative Research:  
Methodological Guidelines Based on  
the COVID-19 Pandemic Experience”

*in Nursing Research*

The Conway School of Nursing is also proud of our nationally ranked online graduate nursing programs.

---

#### MASTER'S DEGREES

- Adult Gerontological Primary Care Nurse Practitioner (AGPCNP)
- Family Nursing Practitioner (FNP)
- Pediatric Primary Care Nurse Practitioner (PNP-PC)
- Pediatric-Dual Acute and Primary Care Nurse Practitioner (PNP- PC/AC)

#### POST GRADUATE CERTIFICATES

- AGPCNP, FNP, PNP-PC and PNP- PC/AC

#### DOCTORAL DEGREES

- Doctor of Nursing Practice (DNP)
- Doctor of Philosophy in Nursing (PhD)

---

Learn more about our programs at  
**[nursing.catholic.edu](http://nursing.catholic.edu)**



# HUNTER COLLEGE SCHOOL OF NURSING



## STARTING SUMMER 2022!

**This post-Master's PhD degree in Nursing prepares nurse scientists to conduct research that supports health equity by addressing the health of diverse, urban individuals, families, and communities.**

**T**his mission advances the Hunter College Center for Nursing Research's goal of urban health equity. Our faculty are experts in health promotion, community-engaged research, and disease prevention.

Based on an apprenticeship model of research, the doctoral program combines rigorous coursework and a residency with experienced research mentors. Graduates are well-equipped with the research skills needed to obtain academic positions and to become nurse scientists in health care institutions.

For more information,  
please visit our website:  
[www.hunter.cuny.edu/nursing](http://www.hunter.cuny.edu/nursing)



**HUNTER**  
The City University of New York

## Program Features:

- 50-credit program can be completed in 3 years
- Courses are offered part time (2-3 courses per semester– all on the same day, 12 months/year, including winter intercession and summer session). This allows for a rich scholarly experience that also works well for many working professionals.
- All students complete a 360-hour research residency during the first 2 years of the program with an individual research mentor.
- Students have the option of taking two courses in Nursing Education, including a teaching residency.
- All courses are taught by Hunter College nursing faculty with active programs of research, together with colleagues from other CUNY departments and the Weill-Cornell Clinical and Translational Science Center. Our highly-qualified faculty also serve as dedicated and exemplary research mentors for doctoral students.

## AVAILABLE FACULTY POSITIONS

**Assistant Professor - Tenure Track**  
PhD, EdD, or Research Doctorate

**Clinical Professor - Non Tenure Track**  
DNP, PhD, EdD or other Doctorate  
NP Certification



**RUTGERS**  
School of Nursing

*Excellence in Action*

**At Rutgers School of Nursing, we honor all nurses for their extraordinary leadership and service across myriad roles through the ongoing pandemic.**

**We're especially proud of and thankful for the contributions made by our school's faculty, staff, 1,700 students, and our 14,400 alumni.**

## **NATIONAL RANKINGS**

**#19 - NIH Funding to Nursing Schools**

*Blue Ridge Institute for Medical Research*

**#15 Doctor of Nursing Practice**

**#19 Master of Science in Nursing**

**#31 Bachelor's in Nursing**

*U.S. News and World Report, 2022*



**BIG**



**[nursing.rutgers.edu](http://nursing.rutgers.edu)**

Rutgers, The State University of New Jersey



# NURSE LEADER FELLOWSHIP SUPPORTS SCIENTISTS

**Applications for 2023 cohort open Sept. 23**

The Betty Irene Moore Fellowship for Nurse Leaders and Innovators is a national program developing the next generation of nurse leaders and innovators. The three-year fellowship provides \$450,000 in funding and advances early- to mid-career nursing scholars to accelerate leadership in nursing research, practice, education, policy and entrepreneurship.

## **Fellowship highlights**

- Generous project funding — \$450,000
- Funding for the fellow's institution — \$50,000
- Innovative leadership curriculum with support from mentors
- Annual weeklong convocation in Sacramento, California
- Monthly online meetings supporting professional growth

**Applications for the 2023 cohort of approximately  
10 nurse leader fellows close at 5 p.m. PST Dec. 1.**

Learn more at [nursing.ucdavis.edu/NurseLeaderFellows](https://nursing.ucdavis.edu/NurseLeaderFellows)

**UCDAVIS  
HEALTH**

Betty Irene Moore Fellowship  
for Nurse Leaders and Innovators





# Always Advancing

**in Research,  
Practice,  
Education**

**You are always advancing,  
so go further with the  
University of Pittsburgh  
School of Nursing.**

Offering the following doctoral  
level programs:

- DNP
- DNP/PhD
- PhD

At Pitt, you will find the degree  
to further your future so you can  
continue to be always advancing.



University of  
**Pittsburgh®**



# Congratulations



to our own

**Yvette Conley,**

PhD, FAAN,

for receiving the

**2022 Distinguished  
Contributions to  
Nursing Research  
Award.**



**MONMOUTH**  
UNIVERSITY

MARJORIE K. UNTERBERG SCHOOL  
of NURSING and HEALTH STUDIES



## **Ann Marie P. Mauro**

Ph.D., RN, CNL, CNE, FAHA, FAAN

President  
Eastern Nursing Research Society



### **Recognizing Excellence**

We are proud to salute Professor Mauro as ENRS president. As dean of the Marjorie K. Unterberg School of Nursing and Health Studies at Monmouth University, she leads an outstanding interprofessional team that provides students with excellent, personalized, transformational educational experiences and fosters a rich environment for innovative transdisciplinary collaborations in education and research.

### **Join Our Outstanding Leadership Team**

The Monmouth University Marjorie K. Unterberg School of Nursing and Health Studies seeks dynamic and innovative leaders to serve in a variety of roles. This is an outstanding opportunity to join a dedicated faculty team and help grow our strong core of undergraduate and graduate programs in a dynamic school that embraces innovative health professions education and celebrates diversity, inclusion, equity, and accessibility. For more information, go to: [jobs.monmouth.edu](http://jobs.monmouth.edu)

**Unterberg SNHS Associate Dean**  
[jobs.monmouth.edu/postings/14897](http://jobs.monmouth.edu/postings/14897)

**Nursing Department Chair**  
[jobs.monmouth.edu/postings/14907](http://jobs.monmouth.edu/postings/14907)

**Hess Endowed Chair in Nursing Education**  
[jobs.monmouth.edu/postings/14840](http://jobs.monmouth.edu/postings/14840)

**Director for Advanced-Level Nursing Education**  
[jobs.monmouth.edu/postings/14963](http://jobs.monmouth.edu/postings/14963)

**Director for Entry-Level Nursing Education**  
[jobs.monmouth.edu/postings/14962](http://jobs.monmouth.edu/postings/14962)

---

[monmouth.edu/school-of-nursing-health](http://monmouth.edu/school-of-nursing-health)



Congratulations to  
Dean Ann Marie P. Mauro, PhD, RN, CNL, CNE, FAHA, FAAN  
for her strong, visionary leadership as  
Eastern Nursing Research Society President (2020-2022)



**MONMOUTH**  
UNIVERSITY

MARJORIE K. UNTERBERG SCHOOL  
of NURSING *and* HEALTH STUDIES



# BOSTON COLLEGE

## Connell School of Nursing




## Take the Next Step

The Boston College Connell School of Nursing is looking for qualified applicants to join our faculty. Visit [bc.edu/csonjobs](http://bc.edu/csonjobs) to learn more.



THE UNIVERSITY OF RHODE ISLAND  
COLLEGE OF NURSING

# Preparing the Next Generation of Nurse Scientists

A black and white portrait of Somatra Simpson, a woman with long dark hair, wearing a light-colored jacket with a button. She is looking slightly to the side with a gentle smile.

*Somatra Simpson, Sculco Scholar*

Expand your career opportunities by pursuing PhD studies at a premier institution with nationally recognized faculty scholars.

**Exceptional funding available for well-qualified, full-time PhD doctoral students:**

- Graduate assistantships (teaching or research) that provide tuition, stipend, and health benefits
- Diversity fellowships and dean's fellowships through the URI Graduate School
- Supplemental funding for outstanding students through two college programs—the Sculco Graduate Nursing Research Scholars and the Donna Schwartz-Barcott and Hesook Suzie Kim Fellowship

**Research focus areas include:**

- Symptom science
- Serious illness and quality of life
- Telehealth
- Health disparities
- Family health
- Women's health
- Eating disorders

*For more information  
and to apply, visit*

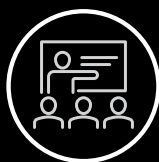
**[uri.edu/nursing](http://uri.edu/nursing)**

*Currently funded research and training grants  
are available on the College of Nursing website.*

**NEW**

# Ready to Take Your Nursing Career to Another Level?

Jefferson College of Nursing is proud to present—



## **Post-Graduate Certificate in Academic Nursing**

For nurses seeking faculty positions in entry-level or graduate nursing education programs

-----  
**Asynchronous • Online**  
**9 credits**



## **MSN in Transformative Systems Leadership**

For aspiring nurse leaders committed to advancing health care

-----  
**Online • Accelerated Options**  
**36 credits**



## **PhD in Nursing**

For emerging nurse scientists & educators

-----  
**Hybrid • Accelerated Options**  
**56 credits**



[Jefferson.edu/Nursing](http://Jefferson.edu/Nursing)  
[JeffCollegeNursing@Jefferson.edu](mailto:JeffCollegeNursing@Jefferson.edu)



**We're changing nursing —  
to change the future.**



## Pursue research at a university that supports your goals.

Join the University of Rochester School of Nursing – a close-knit, collaborative research community that is part of a leading academic medical center in Western New York. We are currently seeking faculty with research interests in sexual health and HIV, maternal and child health, healthy aging, or cancer and palliative care, for the following positions:

- Postdoctoral Fellows
- Postdoctoral Fellow to Tenure-Track Assistant Professor
- Assistant Professor
- Associate or Full Professor

Learn more about our research and available positions at [urson.us/research](http://urson.us/research).



Top 25 in NIH Funding  
Four-Time Magnet-Designated Hospital  
Partnership with Regional Academic Medical Center



SCHOOL OF  
**NURSING**  
UNIVERSITY of ROCHESTER



**COLUMBIA**

SCHOOL OF  
**NURSING**

Columbia Nursing scientists conduct innovative, rigorous, and interdisciplinary research that creates new knowledge to eliminate health disparities and improve the health and health care of individuals, families, and communities worldwide.

Our research Centers of Excellence include:

- **Center for Healthcare Delivery and Research Innovations**, led by Lusine Poghosyan, PhD
- **Center for Health Policy**, led by Patricia Stone, PhD
- **Center for Improving Palliative Care for Vulnerable Adults with Multiple Chronic Conditions**, led by Patricia Stone, PhD, and Jingjing Shang, PhD
- **Center for Research on People of Color**, led by Jacquelyn Taylor, PhD
- **Center for Sexual and Gender Minority Health Research**, led by Tonda Hughes, PhD
- **Precision in Symptom Self-Management Center**, led by Suzanne Bakken, PhD, and Arlene Smaldone, PhD

To learn more, visit [nursing.columbia.edu](http://nursing.columbia.edu)



## PHD PROGRAM NOW WITH FULLY REMOTE SYNCHRONOUS COURSEWORK: LEARNING TOGETHER WHILE STAYING APART

*"A Unique Program that Focuses on  
Leadership and Policy in Healthcare"*

### Molloy College Doctoral Programs

- PhD in Nursing
- DNP in Nursing
- EdD in Education
- Communication Sciences and Disorders (In Development)

### Hagan School of Nursing and Health Sciences MS and Post-Masters Certificates

- Nursing Administration with Informatics
- Family Nurse Practitioner Primary Care
- Pediatric Nurse Practice in Primary Care
- Adult-Gerontology - Nurse Practitioner
- Adult-Gerontology - Acute Care Nurse Practitioner
- Clinical Nurse Specialist: Adult-Gerontology Health
- Family Psychiatric Mental Health Nurse Practitioner
- Nursing Education
- Speech Language Pathology

## HAGAN SCHOOL OF NURSING AND HEALTH SCIENCES

For more information contact  
Bernadette Weldon | [bweldon@molloy.edu](mailto:bweldon@molloy.edu)



*Inviting applications for  
Associate Dean for Nursing  
PhD and Research, and for  
full-time nursing faculty*



THE ROCKEFELLER UNIVERSITY HOSPITAL

HEILBRUNN FAMILY CENTER FOR RESEARCH NURSING

### *Congratulations 2021 Heilbrunn Nurse Scholars*



Jennifer Glayzer, RN  
PhD Student  
University of Illinois-Chicago



Cassandra Godzik PhD, RN  
Post-Doctoral Fellow  
Dartmouth College



Sara Mithani PhD, RN  
Assistant Professor  
University of Texas-San  
Antonio



Seyedeh Tanaz  
Saeidzadeh PhD, RN  
Post-Doctoral Fellow  
University of Wisconsin-  
Madison



McKenzie Wallace PhD, RN  
Post-Doctoral Fellow  
University of Pittsburgh

For additional information about the annual *Heilbrunn Nurse Scholar Awards*, please contact:  
[HeilbrunnFCRN@rockefeller.edu](mailto:HeilbrunnFCRN@rockefeller.edu)



# WE ARE HIRING!

The **Penn State Ross and Carol Nese College of Nursing** is one of the most comprehensive colleges of nursing in any public university in the country. With **over \$12 million in research expenditures** since the college's inception in 2013, the college is home to experts on healthcare disparities, gerontology, palliative care, genomics, telehealth and various additional disciplines. With over 2,100 undergraduate students and approximately 200 graduate students, **our footprint is world-wide** with our faculty creating immeasurable experiences for our students around the globe. We offer four undergraduate degree programs as well as six advanced degree programs with **a presence at 14 Campuses** throughout the state, including **Hershey Medical Center**.

Learn more and apply:

**[nursing.psu.edu/recruiting](http://nursing.psu.edu/recruiting)**



**PennState**  
Ross and Carol Nese  
College of Nursing

## WE PREPARE NURSE EDUCATORS FOR THE WORLD

PhD



The Fitzpatrick College of Nursing PhD Program reflects a unique Teacher-Scholar model educating students as nurse academics and scientists.

- Clinical and education science excellence
- Powerful faculty-mentor relationships
- Supportive cohorts
- Early dissertation development

Full- and Part-Time Options  
Online with On-campus Summer Sessions

[VILLANOVA.EDU/NURSING/PHD](http://VILLANOVA.EDU/NURSING/PHD)

PhD



## CONGRATULATIONS

**Prof. Jasmine Travers**  
ENRS Rising Star Award



**Prof. Fay Wright**  
ENRS Board Member at Large



[nursing.nyu.edu](https://nursing.nyu.edu)

UMassAmherst

Elaine Marieb  
College of Nursing

## LEADING A REVOLUTION IN NURSING

Today's public health and healthcare landscape calls for future leaders prepared to meet the challenges facing the nursing profession. The Elaine Marieb College of Nursing and the **Elaine Marieb Center for Nursing and Engineering** at UMass Amherst are transforming nursing education and research to revolutionize the future of healthcare in Massachusetts and beyond.

Save the date for our nurse-engineering symposium on campus on September 13.

Learn more at [umass.edu/nursing](https://umass.edu/nursing)

Find opportunities to join the faculty and staff at [umass.edu/nursing/about/employment-opportunities](https://umass.edu/nursing/about/employment-opportunities)





# Cummings School of Nursing & Health Sciences

**Accelerated BSN (16 months)**

**RN to BSN**

**MSN**

Nursing Administration, Nursing Education, Global  
Health Nurse, & Family Nurse Practitioner (FNP)

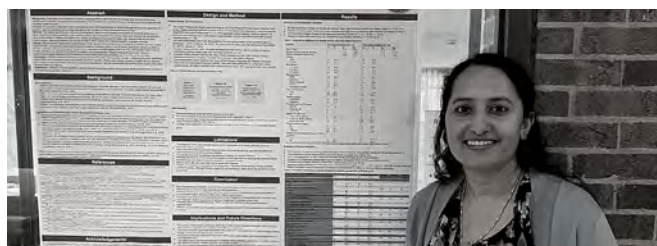
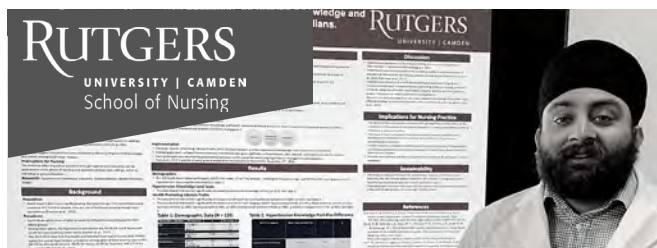
**DNP | Ph.D.**



## The Yvonne L. Munn Center for Nursing Research

Committed to nursing science that impacts clinical practice  
and optimizes quality outcomes for patients, families, and  
the community at Massachusetts General Hospital.

[www.mghpcs.org/MunnCenter/](http://www.mghpcs.org/MunnCenter/)



### Celebrating the Year of the Nurse Educator

*Translating nursing research into practice that promotes  
diversity, health equity, and empowers our students to serve our  
beloved south Jersey community and beyond.*

[nursing.camden.rutgers.edu](http://nursing.camden.rutgers.edu)

## Experience a culture of discovery and innovation at the University at Buffalo.

→ **\$400m**

UB spends more than \$400 million  
annually on research.

→ **160**

Research is conducted through our  
160 multidisciplinary centers and  
institutes and affiliated partners.

→ **x3**

The UB School of Nursing has tripled  
its research expenditures over the  
past 5 years.

**Learn more: [nursing.buffalo.edu](http://nursing.buffalo.edu).**

**UB** | University at Buffalo  
School of Nursing





**Memorial Sloan Kettering  
Cancer Center**  
NCI-designated Comprehensive Cancer Center

Nurse Scientists  
Staff Research  
Projects

Academic Doctoral  
Development Group

Nursing  
Research  
Fellowship

Pre- and Post-  
Doctoral Fellows

Nursing  
Research  
Council

Scholarly Projects  
Review Committee

**Office of  
Nursing  
Research**

**Margaret Barton-Burke, PhD, RN, FAAN, Director**

**Kristen Fessele, PhD, RN, AOCN, Nurse Scientist**

**Ann Marie Mazzella Ebstein, PhD, RN, CGRN, Nurse Scientist**

**Kenton Williams, Program Coordinator**

**MSK Department of Nursing continues  
making Nursing Science!**

# UConn

## SCHOOL OF NURSING



### Research Centers

- P20 Center for Accelerating Precision Pain Self-Management
- Center for Advancement in Managing Pain
- Biobehavioral Laboratory
- International Center for Life Story Innovations and Practice

### Academic Programs

- Doctor of Philosophy
- Doctor of Nursing Practice
- Master of Science
- Post-Graduate APRN Certificates
- Bachelor of Science & CEIN/BS Accelerated Second Degree

**Leading the way in innovation  
and science education**

[nursing.uconn.edu](http://nursing.uconn.edu)

UMASS BOSTON ROBERT AND DONNA MANNING COLLEGE OF  
NURSING AND HEALTHSCIENCES

## Enhancing Health Equity and Quality Policy and Populations

### PhD Nursing Program

- Focuses on the intersection of nursing, population health, and health policy.
- Population health and health policy focus prepares graduates as nurse leaders, researchers and educators in addressing critical population health problems and current health policy issues.

### DNP Program

- Prepares advanced practice nurses for roles in health systems leadership, policy development, and interdisciplinary collaboration
- Family Nurse Practitioner
- Adult/Gerontological Nurse
- Practitioner Adult/Gerontological
- Acute Care Clinical Nurse Specialist



**Let's Build Knowledge and Practice Together!**  
Learn more at [www.cnhs.umb.edu](http://www.cnhs.umb.edu)



## Lienhard School of Nursing

*Committed to serving diverse communities for over 50 years*

Seeking Tenure Track Graduate (FNP)  
and Undergraduate (Adult Health)  
Faculty to join our exceptional team

[careers.pace.edu](http://careers.pace.edu)



**PACE UNIVERSITY**  
College of Health Professions  
LIENHARD SCHOOL OF NURSING



**Congratulations**  
to the  
**2022 ENRS**  
**Award Winners!**

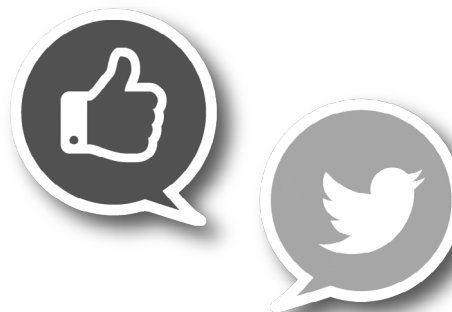
*from your colleagues at Penn Nursing*

[www.nursing.upenn.edu](http://www.nursing.upenn.edu)



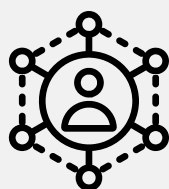
**THE COLLEGE OF NEW JERSEY**  
SCHOOL OF NURSING,  
HEALTH & EXERCISE SCIENCE

[nursing@tcnj.edu](mailto:nursing@tcnj.edu)



Don't forget to use this year's hashtag:

**#ENRS2022**



## CONNECT THROUGH A RESEARCH INTEREST GROUP (RIG)

**Be a part of a community of people who share your interests in nursing science!**

ENRS offers 16 different discussion areas for research ranging from global health to aging. We encourage all members to join at least one RIG and discuss relevant topics, current research trends, and opportunities for abstract submissions.

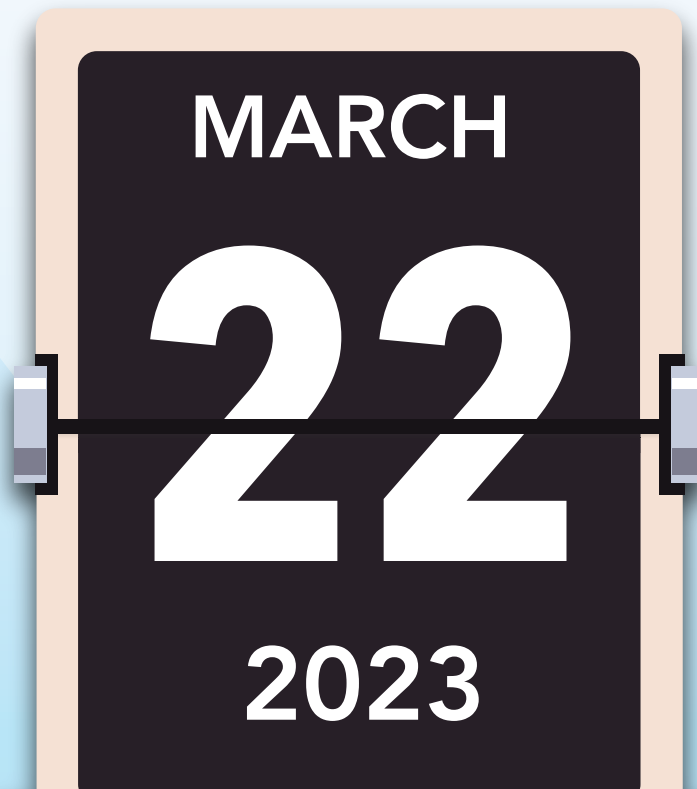
### Current RIGs Include:

- Aging
- Bio-Behavioral
- Chronic Comorbid Conditions
- Comprehensive Systematic Review/Knowledge Translation
- Criminal Justice, Trauma & Violence
- CTSA Nurse Researchers
- Early Career Nurse Scientists
- Evidence-Based Practice Improvement
- Family/Community-Based Participatory
- Global Health
- Health Services Research
- LGBTQIA Health & Health Disparities
- Palliative Care
- Qualitative Research
- Spiritual Health
- Theory Development

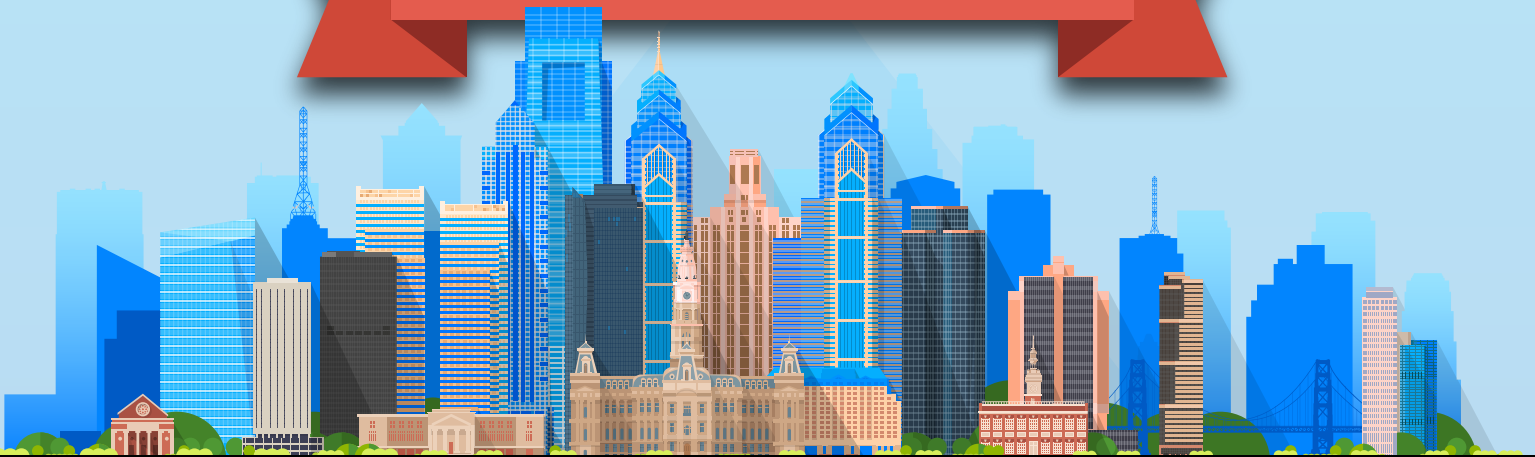


➤ Visit the **Research Interest Group** section of our website [www.enrs-go.org](http://www.enrs-go.org) to learn more!

**ENRS 35<sup>th</sup>**  
**Annual Scientific Sessions**  
**March 22-23, 2023**  
SHERATON PHILADELPHIA DOWNTOWN



**SAVE THE DATE  
FOR NEXT YEAR**



**PHILADELPHIA**  
— PENNSYLVANIA —



Charting the Path of Diversity, Equity and  
Inclusion Through Nursing Science



**Conference Center**  
**Rhode Island Convention Center**  
**1 Sabin St, Providence, RI 02903**



**Omni Hotel**  
**1 West Exchange Street,**  
**Providence, RI 02903**  
**Phone: (401) 598-8000**